



## Winterizing Procedures For:

- Paramount In-floor Cleaning Systems
- MDX-R3 Safety Main Drain
- Deck Side Debris Canister (DDC)
- Equipment Side Debris Canister (EDC)
- MVFuse
- Ultra UV
- Paraglo 6" & 3" LED Pool And Spa Light



**Paramount**

Pool Life. Simplified.

295 East Corporate Place • Suite 100 • Chandler, AZ 85225  
Toll Free: 1.800.621.5886 • Phone: 480.893.7607 • Fax: 480.753.3397  
Paramount@1Paramount.com • [www.1Paramount.com](http://www.1Paramount.com)

REV 062515

## Signal Words and Symbols Used In This Manual

This Owner's Manual and Installation Guide contains specific precautions and symbols to identify safety-related information. You will find **DANGER**, **CAUTION**, **WARNING** and **NOTICE** symbols which require special attention. Please read them carefully and follow these precautions as indicated! They will explain how to avoid hazards that may endanger you or persons using or maintaining your pool or spa.



**DANGER**

**DANGER** indicates a hazardous situation which, if not avoided, will result in death or serious injury.



**WARNING**

**WARNING** indicates a hazardous situation which, if not avoided, could result in death or serious injury.



**CAUTION**

**CAUTION** indicates a hazardous situation which, if not avoided, could result in minor or moderate injury.

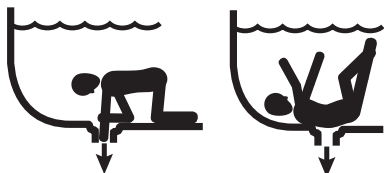
**NOTICE**

**NOTICE** is used to address practices not related to physical injury.

PLEASE REVIEW THE OWNER'S MANUAL AND INSTALLATION GUIDE IN ITS ENTIRETY AND HEED ALL SAFETY INFORMATION. Failure to follow these instructions and warnings can result in **DEATH OR SERIOUS INJURY**.



## DANGER



**DEATH or SERIOUS INJURY** will result from contact with a damaged, loose, or missing drain cover.

- Do not allow limbs to contact or be inserted into a drain pipe with a damaged, loose, or missing drain cover. This could result in swelling of the limb and/or trapping a swimmer underwater.

- Avoid mechanical entrapment of

jewelry, swimsuit, hair decorations, finger, toe, or knuckle in a drain pipe with damaged, loose, or missing drain cover. This may result in trapping a swimmer underwater.

- Do not allow body to come into contact with a drain pipe that has a damaged, loose, or missing drain cover. This may result in trapping a swimmer underwater.

## MAINTENANCE INSTRUCTIONS & WARNINGS:



## WARNING

**DEATH or SERIOUS INJURY** can result from pool or spa drain covers or grates that are clogged by debris.

- All pool and spa drain covers may become obstructed by debris and should be cleaned periodically due to clogging from debris, such as pieces of plastic, hair, fabric, twigs, leaves, seeds, etc.
- The frequency of periodic cleaning will vary depending on the amount and type of debris introduced into the pool or spa
- Clogging of the drain cover will increase the suction effect and increase the likelihood of death or serious injury from those hazards listed above.
- A clogged drain can negatively affect the safety of the drain.
- It is advisable to have a qualified pool or spa professional perform this inspection and debris removal from the pool and spa drain covers.

# SUCTION ENTRAPMENT HAZARD:



**DANGER**

**DEATH or SERIOUS INJURY** will result if a drain cover or grate is not installed and used correctly.

- Pool and spa pumps produce high levels of suction and move high volumes of water, which can cause death or serious injury if a person comes in close proximity to pool or spa drains.
- Keep clear of pool and spa drains to avoid death or serious injury from suction.



**DANGER**

**DEATH or SERIOUS INJURY** will result from **hair entanglement or limb entrapment**.

- Keep clear of pool and spa drains.
- Hair sucked into pool or spa drains will tangle and knot trapping the swimmer underwater. Avoid placing your hair near a pool or spa drain.
- Avoid sitting on pool or spa drains because the suction can cause severe intestinal damage, evisceration, and/or disembowelment.



**DANGER**

**DEATH or SERIOUS INJURY** will result from pool or spa drain covers or grates that are improperly installed, missing, clogged, or broken.

- Inspect pool and spa regularly to insure that drain covers and grates are properly in place and secured.
- Ensure that drain covers are not damaged, cracked, broken, loose, clogged, not properly secured, or missing because these conditions increase the chance of death or serious injury from entrapment.
- If a drain cover is discovered damaged, cracked, broken, loose, clogged, not properly secured, or missing, you should:
  - o Close the pool or spa immediately; and,
  - o Post a closure notice and keep the pool or spa closed until an appropriate ANSI/APSP -16-2011 certified drain cover is properly installed.

CONTENTS

WINTERIZATION INSTRUCTIONS FOR  
PARAMOUNT'S IN-FLOOR CLEANING SYSTEMS.....6

WINTERIZATION INSTRUCTION FOR  
MDX-R3 DEBRIS REMOVAL DRAIN .....8

WINTERIZATION PROCEDURE FOR  
DECK SIDE DEBRIS CANISTER .....9

WINTERIZATION PROCEDURE FOR  
EQUIPMENT SIDE DEBRIS CANISTER..... 10

WINTERIZATION PROCEDURE FOR  
MVFUSE IN-DECK SVRS..... 10

WINTERIZATION PROCEDURE FOR ULTRA UV ..... 11

WINTERIZATION PROCEDURE FOR  
PARAGLO 3" & 6" LED POOL & SPA LIGHT..... 12

# WINTERIZATION INSTRUCTIONS FOR PARAMOUNT'S IN-FLOOR CLEANING SYSTEMS

The following steps are procedures recommended for proper winterization of the Paramount In-Floor Cleaning Systems: PV3, PCC 2000, Cycleclean, EcoPool, Pool Valet, for concrete pools, Vanquish for vinyl liner pools, or Vantage for fiberglass pools. These are in addition to standard winterization procedures for pools with a main drain.

## TO DO LIST:

- ☐ Store the Paramount valve module, canister inner lid and basket in a safe, dry place.
- ☐ Remove and store any "down-jets" located above the freeze line.
- ☐ Blowout and airlock all pool lines.
- ☐ Remove all water from the canister and replace with swimming pool anti-freeze and an empty jug, the same way you winterize skimmers.



Turn off and drain out all pool equipment. Remove valve lid or lids from valve(s). Remove module(s) from valve housing(s). Store module in dry clean area out of the winter elements for winter until reinstallation in spring.



Remove any SwingJets and/or down jet returns in pool (threaded or slip) including down jet body for a secure fit of winterizing plug. Store with module(s).



From valves to pool, place a Schrader plug or blow out plug as recommended

Install and secure Schrader or blow out plugs in all parts of valve(s) (except center feed port of second and multiple valves when multiple valves are being used).

Proceed to blow out lines through Schrader or blow out plugs to pool.

While blowing out the in-floor nozzles, once a good amount of air has come through the nozzle, you have accomplished an air lock. (This procedure is similar to obtaining an air lock when blowing out the bottom drain in the pool.)

Blow out center port of first valve back to filter equipment and plug.

While blowing out the down jets and while air is escaping through the in-wall hole, install and secure a regular winterizing plug.

Repeat until all ports are blown out.

In cases where multiple valves are in use, blow out the feeder port of the first valve into the center port of the second or multiple valve(s), install, and secure plug.

When necessary, pool winter anti-freeze solution should be poured into each line.

Valve housing(s) should be wiped clean and dry of water, reinstall top lid and secure.

# WINTERIZATION INSTRUCTION FOR MDX-R3 DEBRIS REMOVAL DRAIN

## WITHOUT A CANISTER

If vacuum relief suction outlet is located below freeze line skip steps 1, 2 and 3.

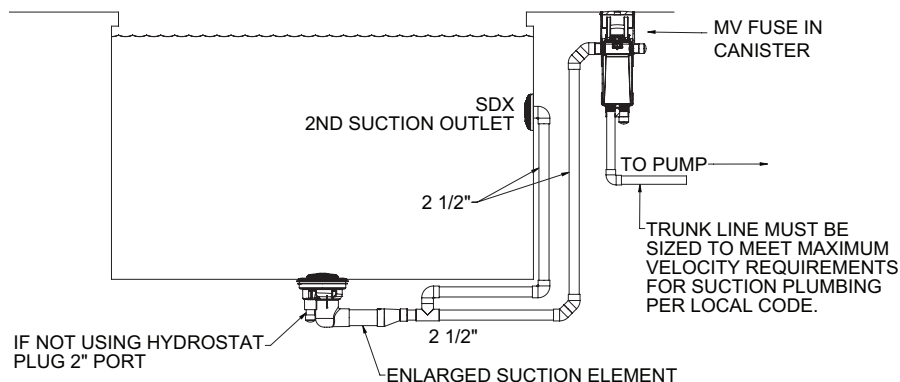


1. Remove grate from second suction and install blow through plug and blow line to achieve airlock.
2. If vent line is installed in main suction line, plug vent line and install blow through plug in pump inlet and blow line to achieve airlock.
3. Lastly, blow vent line to achieve airlock.

## WITH A CANISTER

If vacuum relief suction outlet is located below freeze line skip steps 1 and 2.

1. Remove grate from all wall suctions connected to the flow debris drain and install blow through plug and blow line to achieve airlock.
2. Go to canister instructions step 1 - 4 on page 9.
3. If vent line is installed, install blow through plug and blow line to remove water and add anti-freeze. Repeat vacuum out canister. Then complete canister step 5 on page 9.





## WINTERIZATION PROCEDURE FOR DECK SIDE DEBRIS CANISTER



1. Remove outer lid, inner lid and basket, clean and dry off, and store in same area as modules.
2. Install and secure regular winterization plug in equalizer line of canister to pool at poolside.
3. Install and secure Schrader plug or blow out plug from canister to main drain. Blow out and obtain air lock as previously described, if skimmer is tied into canister, repeat procedure to skimmer.
4. Bottom port of canister to pump may require an extended pipe for ease of blowing out. Install and blow out line from canister to pump. Install and secure plug in pump. Using shop vac, remove all water from within canister components.
5. Extension pipe can be removed and replaced with plug or Gizmo type container if Gizmo not used. Be sure to install device to absorb ice expansion in canister area. Failure to do this may result in potential ice freeze damage to canister.

**Winterization anti-freeze is to be used as necessary or when required.**

## WINTERIZATION PROCEDURE FOR EQUIPMENT SIDE DEBRIS CANISTER



The EDC canister must be winterized in areas prone to freezing temperatures.

1. Remove the EDC canister lid and basket.
2. Use a wet or dry vacuum to remove all the water from the EDC.
3. Replace the EDC lid and proceed with your normal winterizing process.

Consult your local pool professional for the best winterizing method.

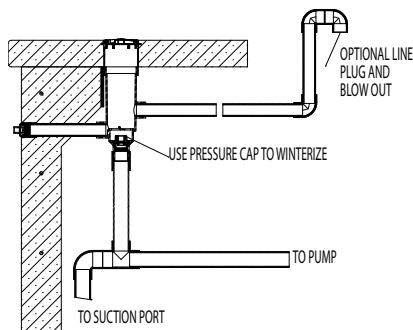
### NOTICE

All water must be removed from the EDC canister in areas that experienced freezing temperatures. Failure to do so will cause damage to the canister that will not be covered under warranty.

## WINTERIZATION PROCEDURE FOR MVFUSE IN-DECK SVRS



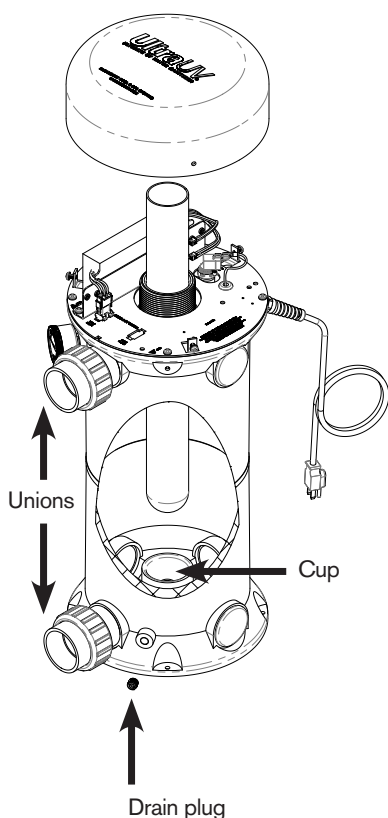
1. Remove the MVFUSE device from the housing and store inside.
2. Install winter plug in bottom port of housing.
3. Install expansion plug in balance line in pool wall.
4. Plug and blow remote air line if installed from vent end of pipe.
5. Vacuum out housing and pour in small amount of antifreeze if needed.
6. Blow drain line like normal.



### WARNING

When opening the pool after being winterized the MVFUSE must be checked for proper operation.

# WINTERIZATION PROCEDURE FOR ULTRA UV



If you are in a climate where you run your pool, spa, water feature, pond year round, be sure that the flow to the unit continues during any periods of below freezing temperatures. Failure to do so will cause damage to the unit.

**Option #1** - Removing the unit for the winter. Turn off the power to the unit. Remove the drain plug and allow all of the water to drain from the unit. Disconnect the unions on the plumbing to ensure that the unit is completely drained. Now, with the power off, disconnect the unit from its power source and place the drained unit in a safe place that has a sustained temperature above freezing. Reinstall after the temperatures are considerably above freezing.

**Option #2** - Leaving the unit in place for the winter. Turn off the power to the unit. Remove the drain plug and allow all of the water to drain from the unit. Disconnect the unions on the plumbing to ensure that the unit is completely drained. There is a cup in the bottom of your unit that the quartz tube nests in. This cup does not drain completely. To remove the water from this cup you must first remove the lamp array and quartz tube. Turn the unit on its side with the unions facing down until all of the water has drained. Reconnect the unit, replace the drain plug, quartz tube, lamps, and cover. You may store the lamps and quartz tube in a safe place.

Another way to remove the water from the unit is to insert a wet dry vac into the unit and suck out the water from the cup in the bottom of the unit.

# WINTERIZATION PROCEDURE FOR PARAGLO 3" & 6" LED POOL & SPA LIGHT

It is recommended to remove Paraglo lights in areas prone to hard freezing below 4" and stored in safe dry place.

Lights should be disconnected from the power cable via the plug top on the rear of the light

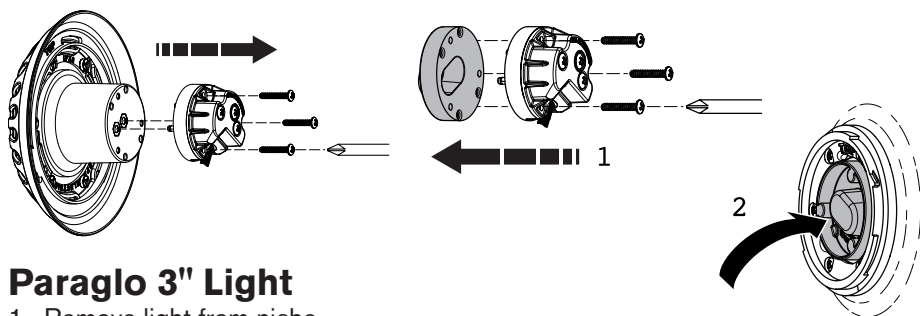
The RED plug cover supplied must be fitted to the plug top prior to reinstalling cable into niche for winter.

Consult your local pool professional for complete pool winterization process.

**NOTE: Damage due to hard freezing is not covered under the manufacturers warranty policy.**

## Paraglo 6" Light

1. Remove light from niche.
2. Unscrew the 3 phillips screws.
3. Assemble terminal cover to plug.
4. (Recommended) store plug within niche during the winter.



## Paraglo 3" Light

1. Remove light from niche.
2. Unscrew the 3 phillips screws.
3. Assemble terminal cover to plug.
4. (Recommended) store plug within niche during the winter.