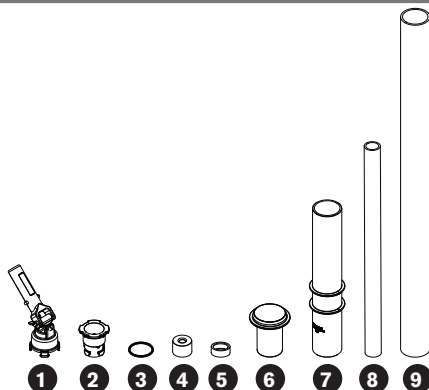


# PARASCOPE MINI-BUBBLER WATER FEATURE INSTALLATION MANUAL

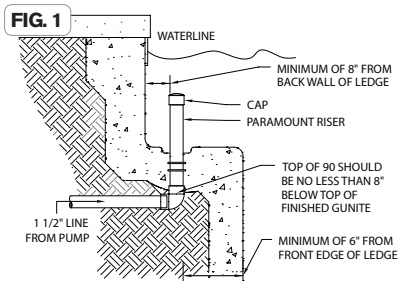
## Parascope Mini-Bubbler Parts

- 1 Small nozzle tool #004-552-5452-00
- 2 Fountain retainer
- 3 Quad ring
- 4 Bubbler nozzle
- 5 Fountain stop
- 6 Smooth body with cap
- 7 2" Tube riser
- 8 20" Parascope pipe
- 9 2" x 33" Sch 40 PVC pipe



## PLUMBING FOR POOLS

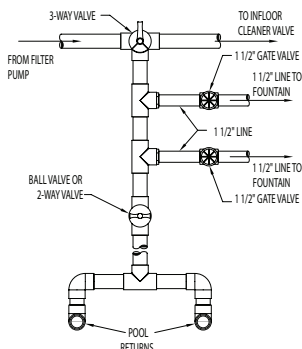
1. Choose location for the Fountains. **NOTE:** Maximum water depth that it can be installed is 18", and the fountain can be plumbed no closer than 6" from the front edge of the step or shelf area or 8" from the back or side of the step or shelf area. **Figure 1**
2. Dig trenches for 1 1/2" Sch. 40 plumbing to the location of the Fountain allowing for the top of a 2" 90 to be 22" for 18" water depth to 12" for 8" water depth below top of finished gunite level.
3. Glue the 2" tube riser to a 90° on the bottom and a slip cap on the top. So that the ribs on the riser will be in the concrete floor of the pool. If the elbow needs to be deeper extend the tube riser with a 2" coupler (not included) and the 2" pipe included.
4. At the location of the fountain dig a vertical shaft deep enough and trench to accommodate the Fountain Housing Assembly.
5. Each Fountain must be fed by a separate 1 1/2" Sch. 40 pipe and gate valve to allow each to be adjusted separately (Figure 2A, 2B, 2C on page 3). Glue the Fountain Housing to the feed pipe so that it is plumb.
6. Pressure-test the Fountain Housing to code (pressure to remain on system until plaster).
7. Backfill the plumbing trenches with dirt to maintain its vertical alignment. If there is a vertical trench in the side wall of the pool, pack dirt around the bottom end of the Fountain Housing to hold it plumb and stabilize it. **NOTE:** If the Fountain Housing is not plumbed vertically it will not retract properly.
8. **DO NOT HEAT BEND OR ANGLE** the riser for the Fountain when installing on a sloped surface, such as a beach entry. Doing so will not allow you to install the fountain or may cause the Fountain Shaft to bind and not raise or lower.



8175 W. Buckeye Rd., Phoenix, AZ 85043  
Toll Free: 1.800.621.5886 • Phone: 480.893.7607 • Fax: 480.753.3397  
Paramount@1Paramount.com • www.1Paramount.com  
US and Foreign patents and patents pending  
see [www.1paramount.com/support/patent-numbers/](http://www.1paramount.com/support/patent-numbers/)

# PARAMOUNT FOUNTAIN MANIFOLD PLUMBING

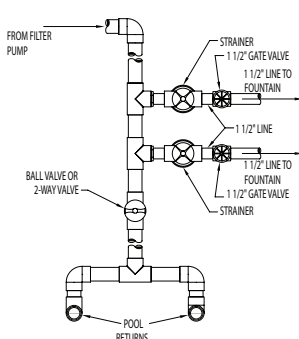
**FIG. 2A**



## With Infloor Cleaning System Figure 2A

1. The feed line to the Paramount Fountain should draw water from the line to the wall returns. Do not plumb the Paramount Fountain in line with the infloor cleaning system. A 3-way valve should be used to turn on either the returns or the infloor cleaning system.
2. Each Fountain that is installed should be run with its own 1 1/2" gate valve to allow adjustment of water flow to each fountain individually for the desired effect.
3. Do Not use a 2-way or 3-way valve in place of the gate valve to the Fountains. 2-way and 3-way valves do not easily make minor adjustments and may damage the Fountainheads.
4. A 2-way ball valve must be plumbed between the tee to the last Fountain and the wall returns so the Fountains water heights may be adjusted individually.

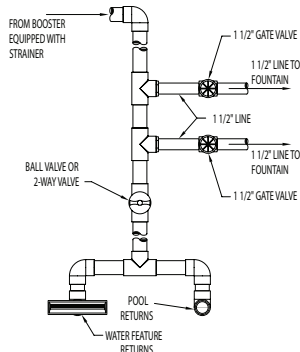
**FIG. 2B**



## With Wall Returns - No Infloor System Figure 2B

1. Each Fountain that is installed should be run with its own 1 1/2" gate valve to allow adjustment of water flow to each fountain individually for the desired effect.
2. Do Not use a 2-way or 3-way valve in place of the gate valve to the Fountains. 2-way and 3-way valves do not easily make minor adjustments and may damage the Fountainheads.
3. A 2-way ball valve must be plumbed between the tee to the last Fountain and the wall returns so the Fountains water heights may be adjusted individually.

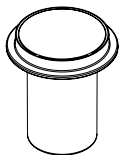
**FIG. 2C**



## With Wall Returns & Water Features Figure 2C

1. Fountains using a Booster Pump must have a strainer such as a Jandy Energy Filter (Part# 3456) between the pump and the fountains.
2. If a Booster Pump is used to run Water Features in the pool it is imperative to have a means of bleeding off the excess water that does not go through the Fountains. This can be accomplished by adding other water features and wall returns.
3. Each Fountain that is installed should be run with its own 1 1/2" gate valve to allow adjustment of water flow to each Fountain individually for the desired effect.
4. DO NOT use a 2-way or 3-way valve in place of the gate valve to the Fountains. 2-way and 3-way valves do not easily make minor adjustments and may damage the Fountainheads.
5. A 2-way ball valve must be plumbed between the tee to the last Fountain and the wall returns so the Fountains water heights may be adjusted individually.

# CONCRETE PRE-PLASTER DETAIL

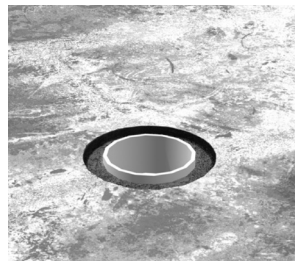
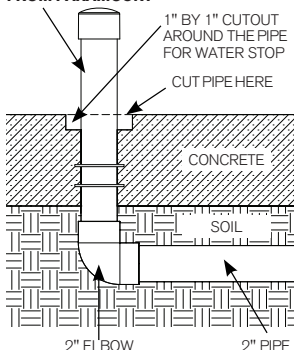


## SMOOTH BODY INSTALLATION GUIDE

### NOTICE

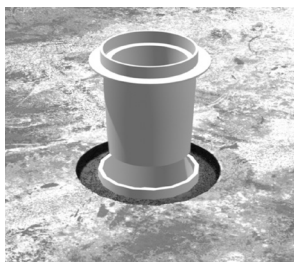
All risers must be 90 degrees (perpendicular) to the finished floor. You can use regular PVC glue on smooth body

**MUST USE 2" RISER PIPE FROM PARAMOUNT**



1. Make a cutout or opening approximately 1" deep and 1" bigger than the pipe. This cutout will be filled with plaster or other finish coat to create a water stop.

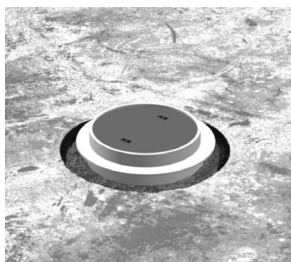
2. Cut off riser pipes flush with concrete surface.



3. Remove cap. Prime the inside of the pipe.

### NOTICE

**DO NOT PRIME THE BODY.**

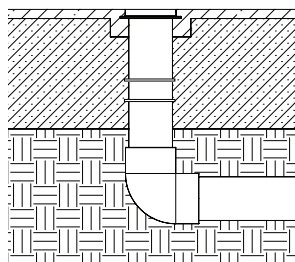


4. Glue the body into the pipe with a regular PVC glue.

### NOTICE

**The glue must cover the full length of the body barrel and 3" deep inside the riser pipe. Push the body into the pipe until the shoulder hits the top edge of the pipe.**

Let fumes vent for 30 minutes then replace all body caps.



### PLASTERING THE POOL

Leave all plaster caps in place for removal at start up.

### NOTICE

Optional, the plaster crew may remove the plaster caps as they finish. The body does not come with the nozzle installed.

# FOUNTAIN STARTUP INSTRUCTIONS

1. Remove Plaster Cap from Fountain and blow out the lines to remove any construction debris that may be in the pipes.

2. Glue the plastic stopper on the shaft **Figure 8**. Set the end of the fountain shaft with the stopper side down over the fountain body and mark the water level on the shaft. **Figure 7**

3. Using the 20" shaft, measure and mark an additional  $\frac{3}{4}$ " away from the stopper end. **Figure 8**

4. Cut the fountain at the farthest mark from the stopper end.

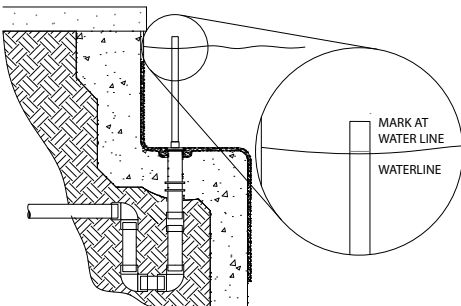
5. Insert fountain shaft through the fountain retainer so the bottom of the fountain retainer is next to the stopper that is glued to the shaft. **Figure 9**

6. Bubbler Fountain **Figure 9**

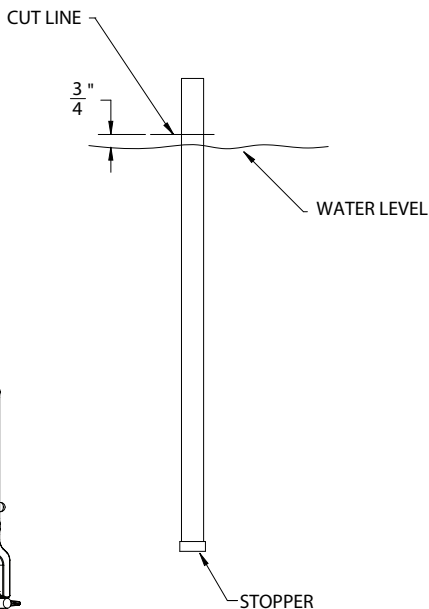
- Glue the bubbler cap over the end of the fountain shaft opposite the stopper.
- Wipe off any excess glue.

7. Install the fountain assembly **Figure 10** into the fountain body in the pool using the 4-pronged nozzle tool.

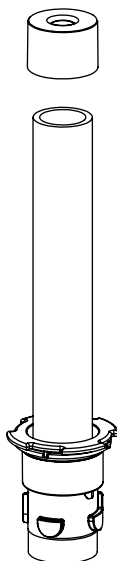
**FIG. 7**



**FIG. 8**



**FIG. 9**



**FIG. 10**

