

# **PARALEVEL™**

AUTOMATIC WATER LEVELER

## **START UP MANUAL**



004-027-8896-00  
REV 033116



Powered by:  
**Paramount**  
*Pool Life. Simplified.*

295 East Corporate Place • Suite 100 • Chandler, AZ 85225

Toll Free: 1.800.621.5886 • Phone: 480.893.7607 • Fax: 480.753.3397

Paramount@1Paramount.com • www.1Paramount.com

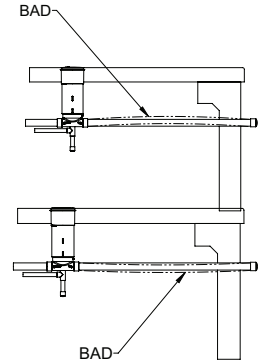
US and Foreign patents and patents pending see [www.1paramount.com/about/patents/](http://www.1paramount.com/about/patents/)

# SYSTEM DESIGN

The Paralevel is designed to control the water level in a swimming pool or spa. The "Posi-Click" control makes adjusting the water level very easy. Four clicks (or one revolution) of the adjustment wheel changes the water level by 1/4". The Paralevel uses "Smart Sensing", eliminating rapid cycling of the device even when the pool is being used. The user can use 1 1/2" or 2" pipe for the balance line. The water line can be plumbed with 1/2" or 3/4" pipe. The Paralevel can also be plumbed with 2" pipe for overflow protection, offering the highest overflow protection in the industry.

## PARALEVEL LAYOUT AND DESIGN CRITERIA

1. Paralevel should be level and plumb.
2. The Paralevel main housing is engraved with "Max High; Max Low; and Pool Level". **The housing should be mounted so that the "Pool Level" line is at the expected water level.**
3. Maximum water pressure is 80 psi.
4. The fill rate at 50 psi is 120 gph (2880 gallons per day).
5. **Warning:** Balance line and overflow line must be plumbed straight. Failure to keep the run of pipe straight may cause an airlock.



## START UP

1. Make sure the water supply line is turned off at the valve.
2. Remove plugs
  - Use the Removal Tool to remove the 1 1/2" NPT Cap.
  - Use a 3/8" socket extension to remove the 1/2" NPT Seal Plug (Fig. 1)
3. Turn on water supply line to flush line for a couple of minutes. Then shut it off.
4. Install the 1 1/2" NPT Nut Retainer. Hand tighten ONLY, even when using tool.
  - Make sure that the Retainer Ring is installed properly in the Retainer Nut. The retaining piece with raised rounded center is inserted facing the top of the retainer nut. (Fig. 2)
  - Use the Removal Tool to install the Nut Retainer
5. Install the 1/2" NPT Flow Plug
  - Use a 3/8" socket extension to install the Flow Plug (Fig. 3)

FIG. 1

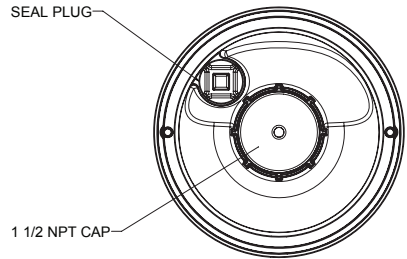


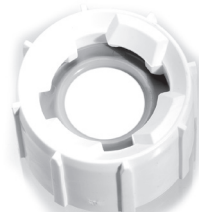
FIG. 2



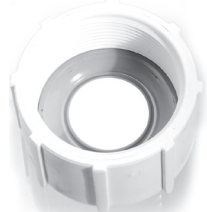
Retaining ring top view with raised rounded center



Retaining ring bottom view with sharper center



Top View: Correct position of retaining ring inside retainer nut with rounded center exposed.



Bottom View: Correct position of retaining ring inside retainer nut with sharper center exposed.

For technical assistance call 1.800.621.5886 or contact your regional representative

6. Installing float assembly

- Grasp the top of the Riser Tube. (Fig. 4)
- Start with float half way on sleeve adjuster (Fig. 5)
- Position the end of the Riser Tube with the o-ring inside the opening at the top of the Nut Retainer. (Fig. 6)
- Turn the riser tube clockwise and wiggle until it drops into the Nut Retainer. Too much downward pressure before it sets into the opening of the Nut Retainer will cause the float assembly to hang up. (Fig. 7)
- Press down on the top of the Riser Tube and twist clockwise 1/4 turn or until it stops. (Fig. 8)

7. Adjustment procedure (standard 3" waterline below beam)

- Turn on water supply at source fully. The Paralevel has anti-water hammer feature as part of its smart sensing. The Paralevel works best at full pressure
- Fill the pool until the water level is just below center of tile with less than 1" left to fill.
- Shut off and remove all auxiliary hoses. Leave the Paralevel water supply on.
- Allow the water level to rise until the Paralevel shuts off.
- Measure the water level from top of beam or bottom of deck. Note the difference from desired water level
- Remove float from housing or reach down on one side pushing on the alternately raised part of the float.
- Turn the float counter-clockwise one revolution for every 1/4" the pool needs to rise and clockwise one revolution for every 1/4" the pool needs to lower .

**Example:** to raise the water level 1", turn the float counter-clockwise four revolutions. (Fig. 9a and 9b)

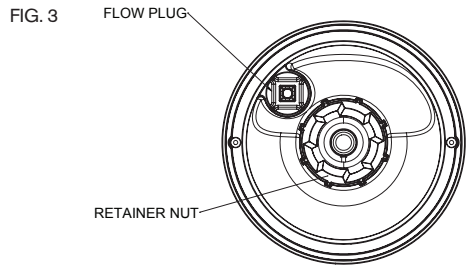


FIG. 4



FIG. 5



FIG. 6

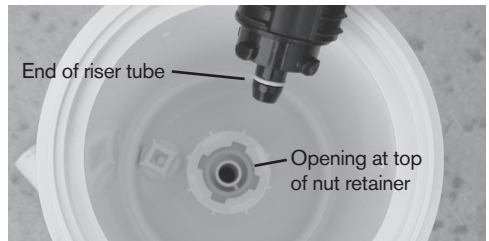


FIG. 7



FIG. 9a

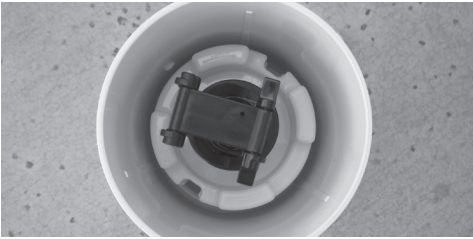


FIG. 9b

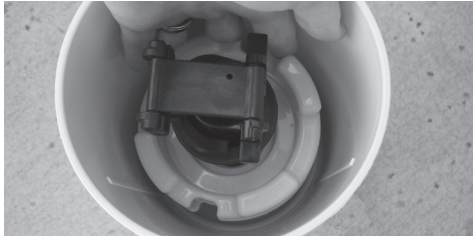


FIG. 8



For technical assistance call 1.800.621.5886 or contact your regional representative

# WINTERIZING INSTRUCTIONS

You will need the items in the winterizing / pressure test kit part number 005-760-2911-00 and tool 004-627-5452-00.

1. Turn off the water to the Paralevel.
2. Remove the Paralevel float assembly by grasping the top of the float assembly (above the adjustment wheel and while pushing down turn the assembly counter clockwise a quarter turn. The float assembly should then pull out. Next using the removal tool #10 on the Paralevel exploded parts diagram (page 6), remove the Retainer Nut and Retainer Ring #19 and #20. Next using a 3/8 inch socket wrench extension remove the Flow Plug and O-ring #17 and #18 on the Paralevel exploded parts diagram. (page 6)
3. Drain the water in the pool to below the opening for the equalizer line for the Paralevel. Place the O-ring and Seal Plug #4 and #5 on the winterizing kit exploded parts diagram (page 7) into the threaded hole that the Flow Plug was removed from.

**Note: If draining the pool down below the equalizer line is not practical, then blow out the equalizer line at the pool side by using a test plug with a Schrader valve and an air compressor, at the same time suck out the water from the water leveler canister.**

4. Disconnect the water supply line at the house going to the Paralevel. Blow this line to the opening where the Retainer Nut and O-ring were while using a wet/dry shop-vac placed directly over the threaded opening where the Retainer Nut was removed from to collect the water blown into the Paralevel housing. When the line is clear place the Cap Seal and Main seal #1 and #3 on the winterizing kit exploded parts diagram (page 7) over this opening. It is recommend that the disconnected water line at the house be taped shut or sealed when disconnected so insects and debris don't get in the line.
5. Keep all of the plugs gaskets and o-ring removed for winterizing for startup in the spring. **Note:** the float assembly will not need to be adjusted next spring as long as you do not turn the adjustment wheel from its set position when removed.

**6. Optional: pour some non-toxic anti-freeze in the water leveler canister.**

## IDENTIFYING PARALEVEL MODEL

1. Turn off the water.
2. Grasp top of float assembly, twist counter clockwise 1/4 turn, and pull out.

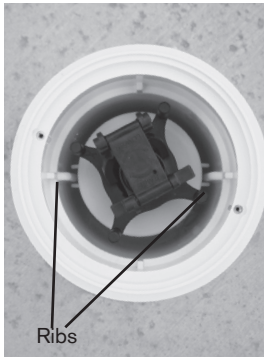
Old Float FIG. 10a



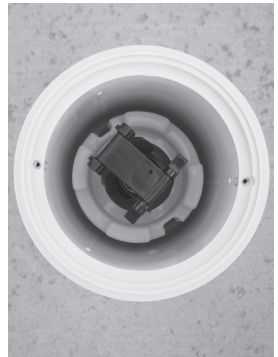
New Float FIG. 10b



Old Tank FIG. 11a



New Tank FIG. 11b



For technical assistance call 1.800.621.5886 or contact your regional representative

## USING NEW FLOAT IN OLD TANK

1. While holding the new float, twist sleeve counter clockwise until it comes out of the float.
2. Turn float over and re-thread on sleeve with flat side up. Be careful not to cross-thread. (Fig. 12)
3. Compare the float height on the sleeve to the old float. The new style float will need to be approximately 5/8" lower on the sleeve to achieve a similar water level. (Fig. 13)
4. Install in the housing and turn on the water supply.
5. If the float is off, shut off the water and remove the float and turn in the direction indicated on the flat side of the float to raise the water level 1/8", one half turn, or 2 posi-clicks. Follow the arrows on the float. (Fig. 14)
6. If the float is on, shut off the water and remove the float and turn in the direction indicated on the flat side of the float to raise the water level 1/8", one half turn, or two (2) posi-clicks. Follow the arrows on the float. (Fig. 14)
7. Repeat steps 5a or 5b until water level is matched.
8. Check pool level after a few days to verify correct set level.

FIG. 12

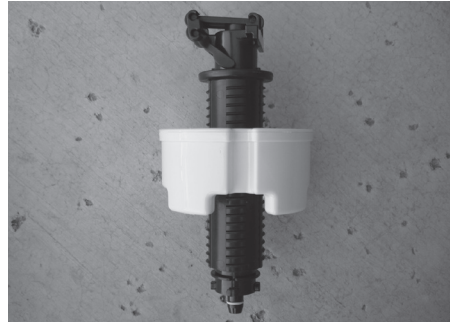


FIG. 13

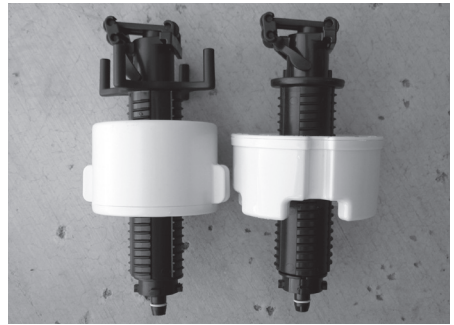
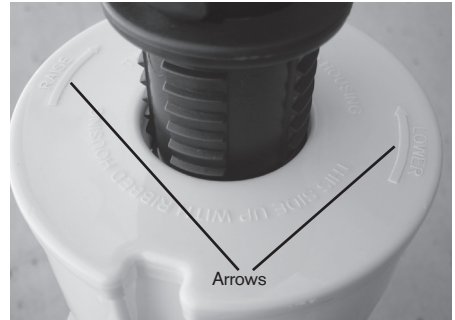
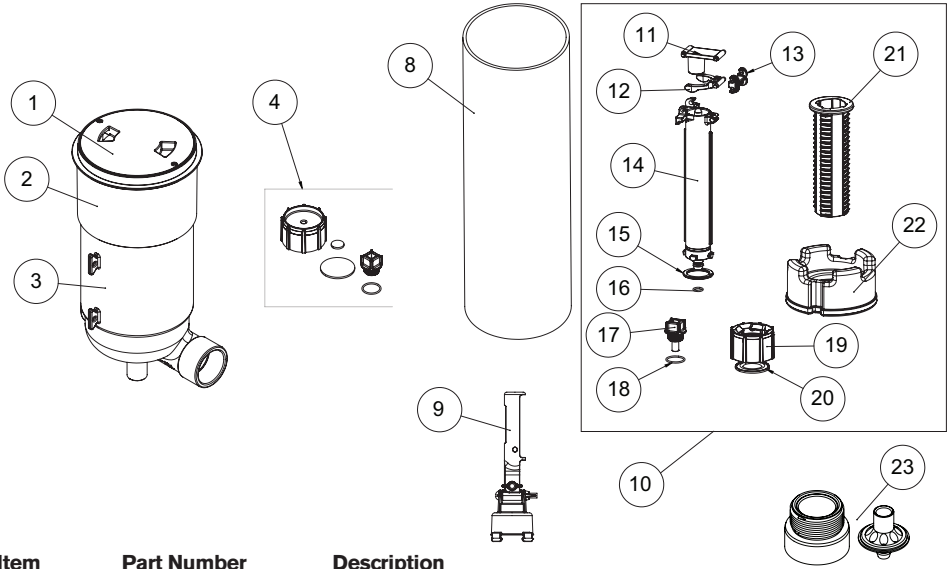


FIG. 14



# 004-760-2902-XX PARALEVEL B

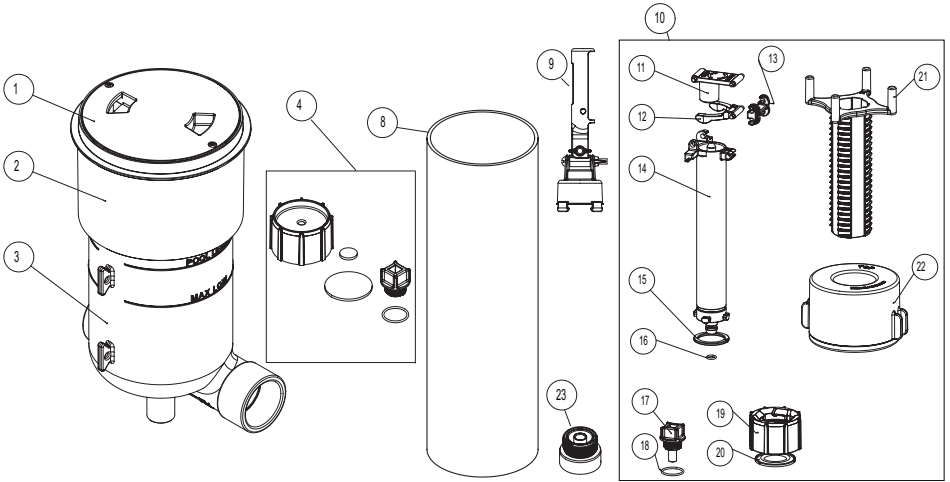


Item	Part Number	Description
1	005-760-2901-XX	LID
2	005-760-2915-XX	DECK RING
3		HOUSING
4	005-760-2911-00	WINTERIZATION/PRESSURE TEST KIT
*		1 1/2 NPT CAP
*		MAIN SEAL
*		CAP SEAL
*		SEAL PLUG
*		O-RING 2-020 EP70
8	005-252-1541-00**	EXTENSION KIT
9	004-627-5452-00**	TOOL
10	004-760-2921-00	START UP KIT B
11	*	TOP LEVER
12	*	LOWER LEVER
13	*	LINK LEVER
14	*	RISER TUBE
15	*	SNAP RING
16	*	O RING 2-011 VITON DUR 75
17*		FLOW PLUG
18	*	O RING 2-020 EP70
19	*	RETAINER NUT
20	*	RETAINER RING
21	*	ADJUSTER SLEEVE
22	*	FLOAT BODY
23	005-761-2934-00	EXTENSION 1"

\* Parts are not available separately \*\* not part of Paralevel order separately

For technical assistance call 1.800.621.5886 or contact your regional representative

# 004-760-2900-XX PARALEVEL A

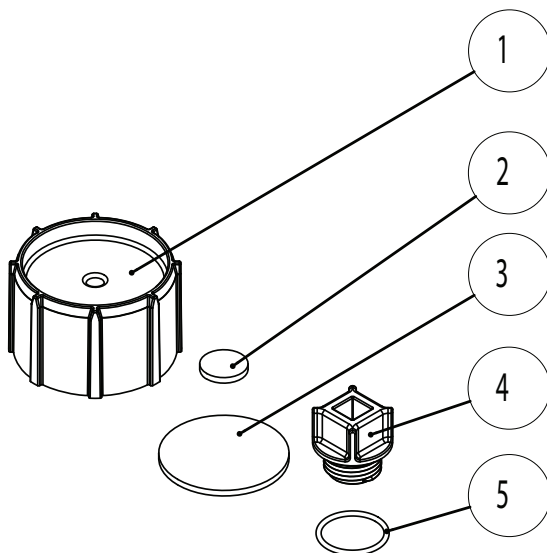


Item	Part Number	Description
1	005-760-2901-XX	LID
2		DECK RING
3		HOUSING
4	005-760-2911-00	WINTERIZATION/PRESSURE TEST KIT
*		1 1/2 NPT CAP
*		MAIN SEAL
*		CAP SEAL
*		SEAL PLUG
*		O-RING 2-020 EP70
8		EXTENSION KIT
9	004-627-5452-00**	TOOL
10	004-760-2921-00	START UP KIT
11	*	TOP LEVER
12	*	LOWER LEVER
13	*	LINK LEVER
14	*	RISER TUBE
15	*	SNAP RING
16	*	O RING 2-011 VITON DUR 75
17*		FLOW PLUG
18	*	O RING 2-020 EP70
19	*	RETAINER NUT
20	*	RETAINER RING
21	*	ADJUSTER SLEEVE
22	*	FLOAT BODY
23	005-761-2934-00	EXTENSION 1"

\* Parts are not available separately \*\* not part of Paralevel order separately

For technical assistance call 1.800.621.5886 or contact your regional representative

# 005-760-2911-00 PARALEVEL WINTERIZING/ PRESSURE TEST KIT



Item	Part Number	Description
	*005-760-2911-00	WINTERIZATION/PRESSURE TEST KIT
1		1/2 NPT CAP
2		MAIN SEAL
3		CAP SEAL
4		SEAL PLUG
5		O RING 2-020 EP70

\*Sold Separately