

**ONLY FOR POOLS
WITH AN EXISTING
MDX SUMP**



ANTI-ENTRAPMENT DEBRIS DRAIN

MDX2 INSTALLATION MANUAL

RETROFIT FIBERGLASS, VINYL & CONCRETE POOLS WITH MDX

SUBMERGED SUCTION OUTLET FOR MULTIPLE DRAIN USE FOR
USE ON FLOOR AS A REPLACEMENT FOR MDX DRAINS ONLY



Safety compliant according to the Virginia Graeme Baker Pool and Spa Safety Act,
ANSI/APSP / ICC-16 2017. Compliant with ANSI/APSP - 7 - 2006.

NOTICE

When installing and using this equipment, basic safety precautions shall always be followed, including the following:

**IMPORTANT SAFETY INSTRUCTIONS.
TO INSTALLERS: READ, UNDERSTAND,
AND FOLLOW ALL INSTRUCTIONS AND
WARNINGS.**

Give these instructions to the facility owner to keep for future reference. Follow all codes and regulations that apply to the design, installation and use of suction outlet fittings.



WARNING

MDX2 and SDX2 must be installed in accordance with Paramount's written instruction manual, and in conformity with applicable Federal, State, Local and Swimming pool industry building and safety codes.

Any modification that increases the flow rate of the circulation system shall require reevaluation of the cover/grate and sump to ensure that the flow rating of the Suction Outlet Fitting Assembly (SOFA) is not exceeded.

Certificate of conformity available at
<https://www.1paramount.com/downloads/manuals/mdx2/MDX2CertificateOfConformity.pdf>

SAVE THESE INSTRUCTIONS



Toll Free: 1.800.621.5886 • Phone: 480.893.7607 • Fax: 480.753.3397
Paramount@1Paramount.com • www.1Paramount.com
US and Foreign patents and patents pending
see www.1paramount.com/support/patent-numbers/
Paramount a Hayward Company

Signal Words and Symbols Used In This Manual

This Owner's Manual and Installation Guide contains specific precautions and symbols to identify safety-related information. You will find DANGER, CAUTION, WARNING and NOTICE symbols which require special attention. Please read them carefully and follow these precautions as indicated! They will explain how to avoid hazards that may endanger you or persons using or maintaining your pool or spa.



DANGER

DANGER indicates a hazardous situation which, if not avoided, will result in death or serious injury.



WARNING

WARNING indicates a hazardous situation which, if not avoided, could result in death or serious injury.



CAUTION

CAUTION indicates a hazardous situation which, if not avoided, could result in minor or moderate injury.

NOTICE

NOTICE is used to address practices not related to physical injury.

PLEASE REVIEW THE OWNER'S MANUAL AND INSTALLATION GUIDE IN ITS ENTIRETY AND HEED ALL SAFETY INFORMATION. Failure to follow these instructions and warnings can result in DEATH OR SERIOUS INJURY.

SUCTION ENTRAPMENT HAZARD:



DANGER

• **DEATH or SERIOUS INJURY will result if a drain cover or grate is not installed and used correctly.**

- Pool and spa pumps produce high levels of suction and move high volumes of water, which can cause death or serious injury if a person comes in close proximity to pool or spa drains.
- SOFA shall not be located on seats or the back rests for seats
- Any modification that increases the flow rate of the circulation system shall require reevaluation of the cover/grate and sump to ensure that the flow rating of the Suction Outlet Fitting Assembly (SOFA) is not exceeded.
- Keep clear of pool and spa drains to avoid death or serious injury from suction.



DANGER

DEATH or SERIOUS INJURY will result from hair entanglement or limb entrapment.



- Keep clear of pool and spa drains.
- Hair sucked into pool or spa drains will tangle and knot trapping the swimmer underwater. Avoid placing your hair near a pool or spa drain.
- Avoid sitting on pool or spa drains because the suction can cause severe intestinal damage, evisceration, and/or disembowelment.



DANGER

DEATH or SERIOUS INJURY will result from pool or spa drain covers or grates that are improperly installed, missing, clogged, or broken.

- Inspect pool and spa before each use to ensure that drain covers and grates are properly in place and secured.
- Ensure that drain covers are not damaged, cracked, broken, loose, clogged, not properly secured, or missing because these conditions increase the chance of death or serious injury from entrapment.
- If a drain cover is discovered damaged, cracked, broken, loose, clogged, not properly secured, or missing, you shall:
 - Close the pool or spa immediately; and,
 - Post a closure notice and keep the pool or spa closed until an appropriate ANSI/APSP/ICC-16 2017 certified drain cover is properly installed.
- Missing, broken, or cracked SOFA component shall be replaced before bathers are allowed to use the pool.
- Loose cover/grates shall be reattached before bathers are allowed to use the pool.

DANGER



- **DEATH or SERIOUS INJURY** will result from contact with a damaged, loose, or missing drain cover.
- Do not allow limbs to contact or be inserted into a drain pipe with a damaged, loose, or missing drain cover. This could result in swelling of the limb and/or trapping a swimmer underwater.
- Avoid mechanical entrapment of jewelry, swimsuit, hair decorations, finger, toe, or knuckle in a drain pipe with damaged, loose, or missing drain cover. This may result in trapping a swimmer underwater.
- Do not allow body to come into contact with a drain pipe that has a damaged, loose, or missing drain cover. This may result in trapping a swimmer underwater.

MAINTENANCE INSTRUCTIONS & WARNINGS:

WARNING

DEATH or SERIOUS INJURY can result from pool or spa drain covers or grates that are clogged by debris.

- Any field modification made to a SOFA not authorized by the manufacturer's instructions shall void the SOFA certification.
- No modification shall be made to the SOFA structure or flow path unless the new configuration has been certified as a new SOFA.
- All pool and spa drain covers may become obstructed by debris and should be cleaned periodically due to clogging from debris, such as pieces of plastic, hair, fabric, twigs, leaves, seeds, etc.
- The frequency of periodic cleaning will vary depending on the amount and type of debris introduced into the pool or spa
- Clogging of the drain cover will increase the suction effect and increase the likelihood of death or serious injury from those hazards listed above.
- A clogged drain can negatively affect the safety of the drain.
- It is advisable to have a qualified pool or spa professional perform this inspection and debris removal from the pool and spa drain covers.
- When servicing the drain cover, the pump connected to the suction must be turned off.
- Do not perform any service of the drain cover in water level above your waist.
- Use drain covers only with a pumping system rated for the corresponding flow or less. Failure to do so can result in hair or body entrapment which can cause death or serious injury. If in doubt about the rating of your system, consult a qualified pool or spa professional.
- Use only the supplied stainless-steel screws with the drain cover. Screws put into the frame anywhere except in the original screw holes will not hold and will allow the drain cover to come off the main drain, causing an entrapment hazard. If a screw hole(s) is stripped, inserts missing, loose, or damaged, consult your owner's manual and installation guide for proper steps to replace, correct, or reattach the compromised drain or drain component.
- The use of adhesives or other attachment methods that prevent access to suction piping or SOFA components requiring periodic service is prohibited.

WARNING

Suction can pose a serious hazard to swimmers just as electricity can be a hazard. Both are important for proper water filtration and both must be treated with respect. Suction safety begins with a professional design that includes a

quality suction system installed by a certified contractor.


Certified builders will address the following issues when designing and installing a proper filtration system:

- Properly bond-grounded pumps, time clocks, switches and any other metal in or near water. This is required to address Electrical Shock Hazards.
- Design the suction piping so there are no single-point suction hazards; single-point suction (one drain) is a leading cause of Body Suction Entrapment Hazards. Note: your certified builder has many effective options for addressing this hazard; they may include dual-drain systems, like MDX-R3, skimmers, gutters, negative edge features and many more products and piping designs known to professionals.
- Install ANSI/APSP/ICC-16 2017 listed drains, suction covers and debris removal systems. This is the **ONLY** approved option for preventing Hair Entrapment Hazards, the leading cause of suction related injuries.
- Design and install an effective circulation system (including optional cleaning systems), to direct filtered water to all areas and interior surfaces. **NOTE:** Suction fittings can **NOT** clean or direct filtered water for proper sanitation; that can only be done on the pressure (return) side of the filtration system.

While suction injuries are extremely rare, drowning and diving injuries are far too common and there is little your certified builder can do to eliminate these hazards. You must educate yourself and your guests. Below are some important safety issues every swimmer must know and recognize.

- PREVENT DROWNING: Watch children at all times, no swimming alone.
- NO DIVING IN SHALLOW WATER: You can be permanently injured.
- PREVENT SUCTION ENTRAPMENT: Inspect suction covers before swimming, keep swimmers away from suction fittings, protect long hair, don't swim with loose clothing or large and dangling jewelry.

For more information about the Virginia Graeme Baker Pool and Spa Safety Act, contact the Consumer Product Safety Commission at (301) 504-7908 or visit www.cpsc.gov.


**WARNING**

Always turn off all power to the pool pump before installing the cover or working on any suction outlet.

- Cover/Grates and all other SOFA components shall be replaced at or before the end of their service life. Service life begins the month and year in which the SOFA is installed with or without water. See parts breakdown at end of this manual for specific component service life notations.
- Any SOFA component that is severely faded, chalking, or brittle when flexed shall be replaced even if it has not reached its indicated service life.
- If the sump/mud ring or any screw receptacle is stripped, cracked or broken that component must be replaced.
- Any SOFA component held in place by the pool finish or concrete substrate that becomes cracked or broken; the material that holds it must be stripped from around the SOFA and new components “mudded” in place. The surface substrate must be free of deterioration and voids.

**ADHERE “REPLACE COVER ASSEMBLY
STICKER TO THIS PAGE**

Adhere this label to the inside of equipment panel.
Must mark year and month of installation



Paramount
Pool Life. Simplified.
A Hayward Company

295 E. Corporate Place, Chandler, AZ 85225
1-800-621-5886 • 1paramount.com

Replace cover assembly within (5) five years.
Replace all other components within (25) years.
Maximum GPM – 90 (340 LPM)

Circle year and month of installation.

Year	2020	2021	2022	2023	2024							
Month	01	02	03	04	05	06	07	08	09	10	11	12

System flow rate _____
Installed location _____

001-025-8819-00 ECN 1900 REV00 PUB 011520

MDX2 SYSTEM DESIGN

NOTICE

Maximum Pump Size:

MDX² Retro is rated for a maximum of 90 GPM (340 LPM). While system flow rate will vary with pump size and the Total Head Loss for a given system, virtually any modern pump is capable of exceeding this limit, therefore it is the responsibility of the system designer to make sure it is not possible to exceed 90 GPM (340 LPM). In the event of one suction outlet being completely blocked, the remaining suction outlets serving that system shall have a flow rating capable of the full flow of the pump(s) for the specific suction system.

The flow rating for pools with multiple, blockable SOFAs piped together in one body of water without isolation valves shall be determined by combining the flow rating of all SOFAs, minus the flow rating of one. If the flow ratings of all SOFAs are not equal, subtract the flow rating of the SOFA with the highest flow rating. When used in multiple-outlet systems, cover/grates marked blockable shall be arranged such that the two outermost sumps/frames shall have a minimum separation of three feet, measured center-to-center. If they are to be installed closer than three feet center-to-center, they shall be located on two different planes, i.e., one SOFA shall be located on the pool floor, and one shall be located on a vertical wall, or one SOFA shall be located on each of two separate walls.

MDX2 is a blockable SOFA and must be installed only as a multiple SOFA system as described in this installation manual. This VGBA Suction outlet has an installation specific flow rating and this product SHALL NOT be installed on a pumping system that is capable of exceeding this limit, which varies based on the number and location of installed suction outlets. READ and FOLLOW the section of the included installation instructions explaining how to calculate the suction system flow ratings and that of the installed pumping system. When replacing the MDX Cover and Funnel Assembly with the MDX² Retrofit cover **DO NOT** disable the secondary drains or the third layer of protection. The third layer of protection may be another submerged drain or a vent tube. If you do not have a third layer of protection on this system then you will need to add an SVRS or cut the floor of the pool and add a SDX2 drain teed into the main suction line 3' 10" minimum from the MDX. When replacing the MDX be sure to check all other submerged suction outlets in the pool for broken or missing covers, correct or missing screws and compliant covers. Be sure to replace these covers with a SDX2 or SDX2 retro covers to bring all suction outlets into compliance.

**DO NOT INSTALL THE MDX2 RETRO
UNLESS THERE IS AN MDX SUMP
AVAILABLE TO ACCEPT THE MDX2 RETRO.**

For multiple drain systems where more than two drains are used, the maximum flow rate is calculated per ANSI/APSP-7 Section 4.6 as shown in the following chart.

DESCRIPTION	MAXIMUM SYSTEM FLOW FLOOR	MINIMUM FLOW RATING OF EACH COVER % MAXIMUM SYSTEM FLOW RATE
*One SDX2 High Flow Safety Drain	90 gpm (340 lpm)	100%
Two SDX2 High Flow Safety Drains	90 gpm (340 lpm)	100%
Three SDX2 High Flow Safety Drains	135 gpm (533 lpm)	66.7%
Four SDX2 High Flow Safety Drains	180 gpm (711 lpm)	50%

*The addition of an approved SVRS is required when a single SDX2 is being used.

Table derived from ANSI/APSP-7 Section 4.6 Table 1. System flow based on 3" side outlet floor plumbing configuration chart on page 6.

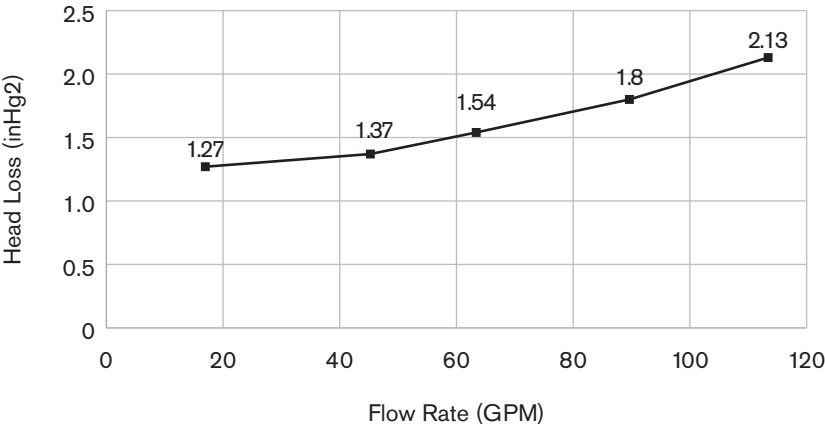
Pipe size. To design an efficient suction system in accordance with national swimming pool standards, the following pipe sizing guideline should be followed:

SUCTION PIPE SIZE	MAX RESIDENTIAL GPM	MAX PUBLIC GPM
1½"	50	37
2"	82	62
2½"	117	88
3"	181	136
4"	313	234

*minimum pipe size 1½"

FLOW HEAD LOSS CURVE

Head Loss Curve for SOFA model MDX2



HYDROSTAT PLUMBING WARNING

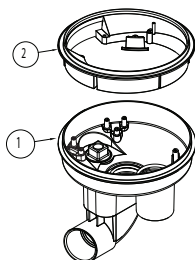
Hydrostatic Fitting

The hydrostatic port inside the MDX² Sump is equivalent to a 2" Threaded Female Adapter and a 2" Slip Fitting Outside the MDX² Sump. Paramount recommends the use of the 2" thread plug provided. Do not use check valves here that are prone to sticking open causing the need to open the drain cover exposing a suction risk. This port is for the purpose of a hydrostat only.

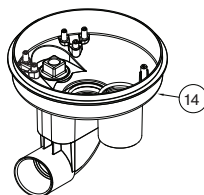
WHEN NOT REFINISHING POOL

004-202-2221-XX MDX2 RETRO FOR CONCRETE WITH LEVELING RING

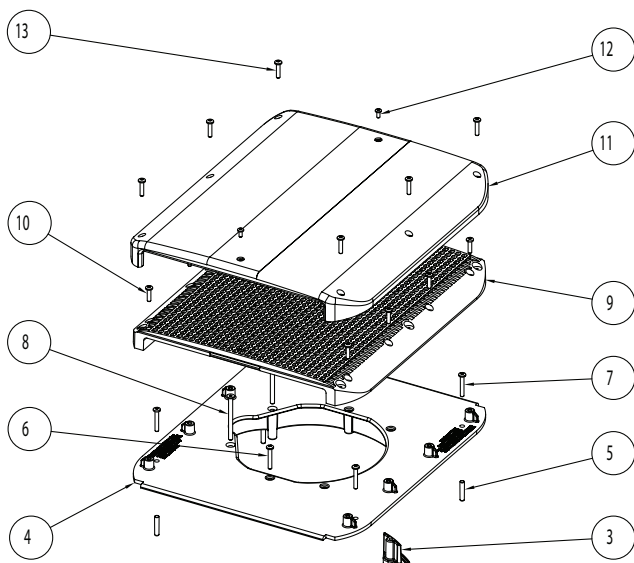
****Replace cover assembly and hardware within 05 installed years.**



Sump and leveling ring
not available to order



Sump not available to order



Item	Part Number	Description
*1		Sump MDX Concrete - 2 1/2" (must be present in the pool)
*2		Leveling Ring (must be present in the pool)
**3	005-252-2070-00	Clip Anchor MDX2 Fiber Retro and MDX with leveling ring
**4	005-202-2209-00	Lower Support
**5		Concrete Anchors
**6		Screw No. 10x 2 1/4" Security Head 316 SS
**7		Screw 10 x 1 1/4" Security Head 316 SS
**8		Screw No. 12x 2 3/8" Security Head 316 SS
**9	005-202-2207-00	Upper Support
**10		Screw: No. 10X3/4" Security Head 316 SS
**11	005-252-2205-XX	MDX2 Cover (XX=Color Code)
**12		Screw: No. 8X3/8" Security Head 316 SS
**13		Screw: No. 10X3/4" 316 SS
		Screw Pack MDX2 Retro (includes item #5,6,7,8,10,12,13,) 316 SS
*14		Sump MDX Concrete 1 piece.

*** Not part of MDX² Retro**

For technical assistance call 1.800.621.5886 or contact your regional representative

WHEN NOT REFINISHING POOL

NOTICE

which the SOFA is installed.

DO NOT USE POWER TOOLS TO INSTALL FASTENERS. Start all fasteners by hand to prevent cross threading. Cover/grate when installed shall not protrude more than 2" (51mm) from the finish surface of the pool in

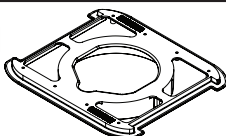
MDX2 - CONCRETE DRAIN ASSEMBLY

Concrete Drain Assembly (with leveling ring):

After draining the pool:

1. SOFA components and fastener receptacles shall be clean and free of debris and obstruction during installation of cover/grate fasteners.
2. Position the Retro Lower Support (4) over the existing sump as shown in figure 1 and attach with the screws (6 & 8) and anchor clips (3) provided by Paramount. Secure all self threading screws to 10 in-lbs. (Fig. 1)
3. If the embedded sump has no leveling ring, the anchor clips are not used.
4. Using The Retro Lower Support as a template, drill (4) 1/4" holes in the concrete. The holes must be drilled at least 1 1/2" deep. (Fig. 2)
5. The holes should be clear of any debris left in the bottom.
6. Press in the concrete anchors (5) supplied by Paramount. The concrete anchors must be pressed in its full length. (Fig. 3)
7. Install the (4) #10 x 1 1/4" screws (7) provided by Paramount. Secure all self threading screws to 10 in-lbs. (Fig. 4)
8. Install upper support (#9) onto lower support (#4) and secure with 8 (eight) security screws (#10). Secure all self threading screws to 20 in-lbs. on initial install and 16 in-lbs. on subsequent installs.
9. Install the cover (#11) onto the upper support (#9) and secure with 6 (six) security screws (#13) and 2 (two) security screws (#12). Secure the (6) #13 screws to 24 in-lbs. and the (2) #12 screws to 20 in-lbs. on initial install and 15 in-lbs. on subsequent installs.
10. After securing each SOFA component hand check that it is snug to the sump /frame before proceeding to the next component.

NOTICE



If the retro cover cannot be affixed securely, strip the plaster and embed a plaster ring and complete 004-202-2219-XX MDX2 cover assembly. Alternatively the MDX sump can be cut out of the pool floor and replaced with the MDX-R3.

Fig. 1

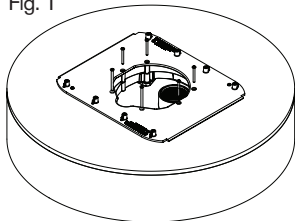


Fig. 2

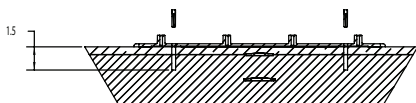


Fig. 3

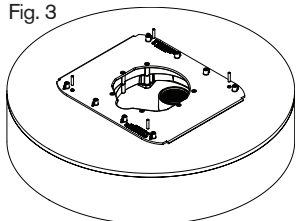
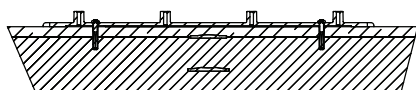


Fig. 4



MDX2 CONCRETE DRAIN ASSEMBLY WHEN RE-FINISHING POOL SURFACE

NOTICE

DO NOT USE POWER TOOLS TO INSTALL FASTENERS. Start all fasteners by hand to prevent cross threading. Cover/grate when installed shall not protrude more than 2" (51mm) from the finish surface of the pool in

which the SOFA is installed.

MDX2 CONCRETE DRAIN ASSEMBLY

Plaster Ring Installation:

Set the plaster ring at final finish.

1. Align the Plaster Ring Keyway with the Sump Alignment Key. (Fig. 5)

Note: Sump alignment key can be removed if desired allowing 360° of plaster ring alignment.

2. Adjust the elevation and the angle of the Plaster Ring to align it with the finished interior surface of the pool, spa, or basin.
3. Press into finish material and trowel surface flush with to edge of plaster ring.
4. Install new SDX2 mud ring at final finish

Assemble the drain PRIOR TO ADDING WATER

1. SOFA components and fastener receptacles shall be clean and free of debris and obstruction during installation of cover/grate fasteners.
2. Install upper support onto plaster ring and secure with 8 (eight) security screws with screw driver security T25. Secure all self threading screws to 23 in-lbs. on initial install and 18 in-lbs. on subsequent installs.
3. Install the cover onto the upper support and secure with 6 (six) phillips screws and 2 (two) phillips screws. Secure (6) longer screws to 38 in-lbs. on initial install and 30 in-lbs. on subsequent installs and the (2) short screws to 20 in-lbs. on initial install and 15 in-lbs. on subsequent installs.
4. After securing each SOFA component hand check that it is snug to the sump /frame before proceeding to the next component.
5. Replace with SDX2 assembly instruction from MDX-R3 manual page 10

Concrete Cover Assembly (Fig. 6)

1. Align the SDX2 Concrete Support with the alignment tab located on the SDX2 Concrete Ring.
2. SOFA components and fastener receptacles shall be clean and free of debris and obstruction during installation of cover/grate fasteners.
3. Install three (3) machine screws through the SDX2 Concrete Support. Secure the screws without over tightening to 18 in-lbs.
4. Align the SDX2 Cover with the SDX2 Support holes.
5. Install three (3) security screws through the SDX2 cover. Secure screws to (14 in-lbs)
6. After securing each SOFA component hand check that it is snug to the sump /frame before proceeding to the next component.

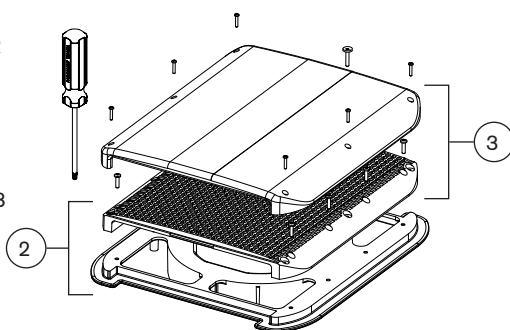


Fig. 5

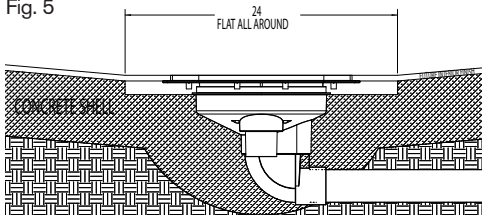
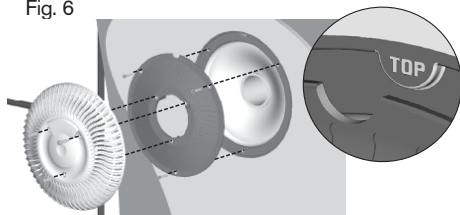


Fig. 6

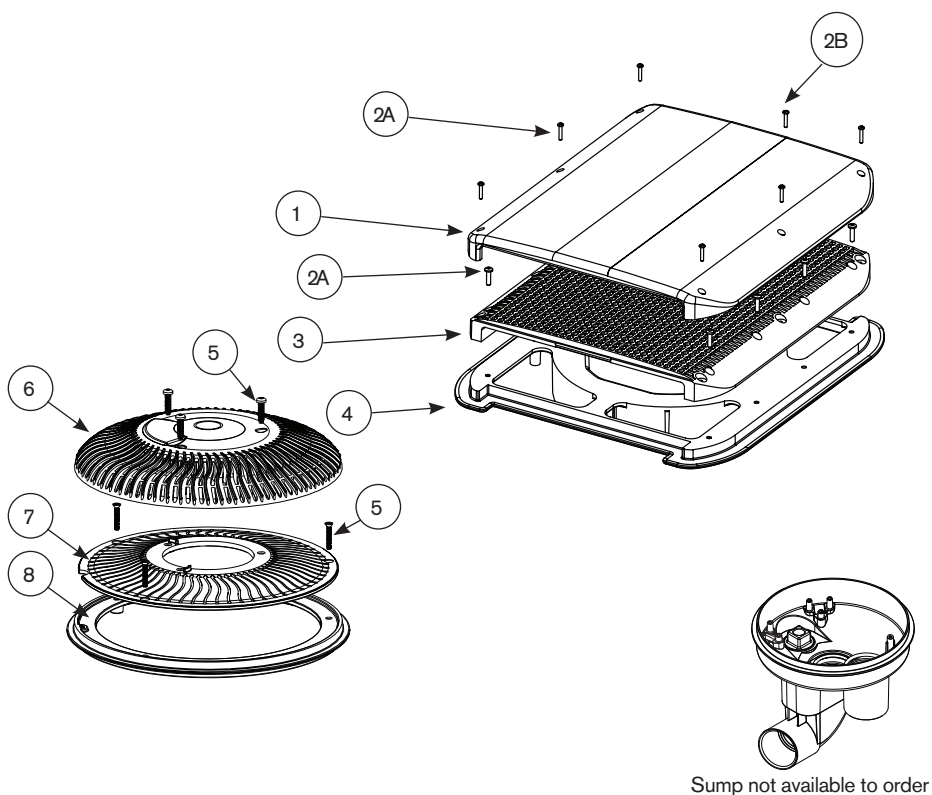


FOR USE WITH NEW INTERIOR SURFACE WHEN REFINISHING POOL SURFACE

****Replace cover assembly and hardware within 05 installed years.**

*****Replace all other components within 25 installed years**

004-202-2219-XX MDX2 FOR CONCRETE POOLS



Item	Part Number	Description
**1	005-202-2204-XX	MDX2 Cover
**2A	005-202-2210-00	14 pack screws: MDX2, 10 x 3/4" 316 SS
**2B	005-202-2210-00	2 pack screws: MDX2, 8 x 3/8" 316 SS
**3		Upper support
***4		Lower support
**5	005-252-0810-00	SDX2 screw pack: (3) No. 10 x 7/8" TORX with PIN SS B, (3) No. 10-32 x 1/4" Phillips 316 SS
**6	005-252-2097-XX	SDX2 cover
**7	005-252-2066-00	SDX2 support for concrete pools
***8	005-252-2050-00	SDX2 ring for concrete pools

MDX2 - VINYL DRAIN ASSEMBLY

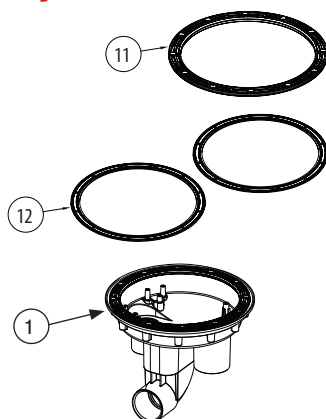
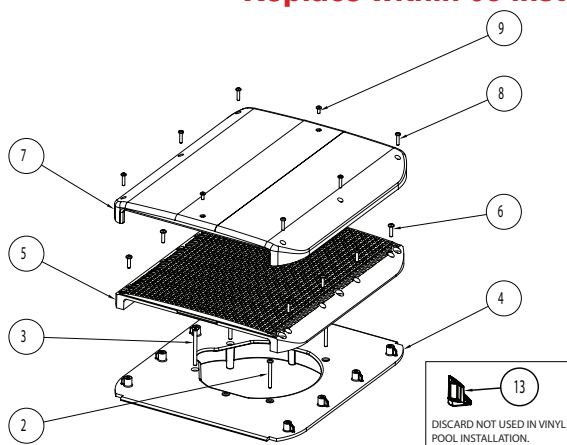
1. SOFA components and fastener receptacles shall be clean and free of debris and obstruction during installation of cover/grate fasteners.
2. Position the Retro Lower Support (4) over the existing sump as shown in "Fig. 1", page 8 and attach with the screws (2 & 3) provided by Paramount. Secure all self threading screws to 10 in-lbs. (Fig. 1)
3. Install upper support (#5) onto lower support (#4) and secure with 8 (eight) security screws (#6). Secure all self threading screws to 20 in-lbs. on initial install and 16 in-lbs. on subsequent installs.
4. Install the cover (#7) onto the upper support (#5) and secure with 6 (six) security screws (#8) and 2 (two) security screws (#9). Secure the (6) #13 screws to 24 in-lbs. and the (2) #12 screws to 20 in-lbs. on initial install and 15 in-lbs. on subsequent installs.
5. After securing each SOFA component hand check that it is snug to the sump /frame before proceeding to the next component.

NOTICE

If the retro cover cannot be affixed securely, remove the MDX sump and replace with the MDX-R3 drain assembly.

004-202-2221-XX MDX2 RETRO FOR VINYL

****Replace within 05 installed years**



*Sump not available to order

Item	Part Number	Description
*1		Sump Assembly - 2 1/2" (must be present in the pool)
2		Screw: No. 10X2 1/4" Security Head 316 SS
3		Screw: 12 x 2 3/8" Security Head 316 SS
4	005-252-2209-00	Lower Support Vinyl/Fiber
5	005-252-2207-00	Upper Support (XX=Color Code)
6		Screw: No. 10X3/4" Security Head 316 SS
**7	005-252-2205-XX	MDX2 Cover (XX=Color Code)
8		Screw: No. 8X3/4" Vinyl Security Head 316 SS
9		Screw: No. 8X3/8" Security Head 316 SS
*10	005-252-0818-00	Screw: 12-14 x 1 1/2" Vinyl Sump 316 SS
*11	005-252-2044-00	Seal Ring
*12	005-252-0010-00	Vinyl Gaskets (2 pk)
#	005-202-2211-00	Screw Pack MDX2 Vinyl (includes item #s 2, 3, 6, 8, 9) 316 SS
13	005-252-2070-00	Clip Anchor MDX2 Fiber Retro NOT USED IN VINYL POOL INSTALLATION

*** Not part of MDX² Retro**

For technical assistance call 1.800.621.5886 or contact your regional representative

MDX2 - FIBERGLASS DRAIN ASSEMBLY

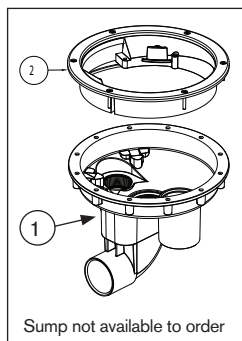
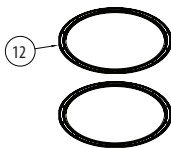
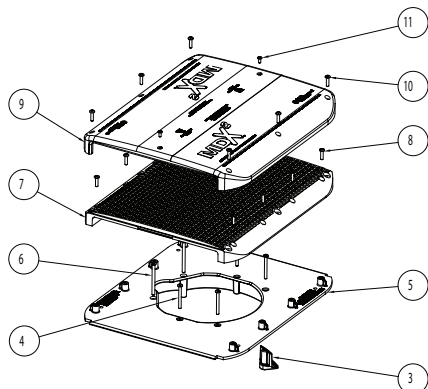
1. SOFA components and fastener receptacles shall be clean and free of debris and obstruction during installation of cover/grate fasteners.
2. Position the Retro Lower Support (5) over the existing sump as shown in "Fig. 1", page 8 and attach with the screws (4 & 6) and anchor clips (3) provided by Paramount. Secure all self threading screws to 10 in-lbs. (Fig. 1)
3. Install upper support (#7) onto lower support (#5) and secure with 8 (eight) security screws (#8). Secure all self threading screws to 20 in-lbs. on initial install and 16 in-lbs. on subsequent installs.
4. Install the cover (#9) onto the upper support (#7) and secure with 6 (six) security screws (#10) and 2 (two) security screws (#11). Secure the (6) #13 screws to 24 in-lbs. and the (2) #12 screws to 20 in-lbs. on initial install and 15 in-lbs. on subsequent installs.
5. After securing each SOFA component hand check that it is snug to the sump /frame before proceeding to the next component.

NOTICE

If the retro cover cannot be affixed securely, remove the MDX sump and replace with the MDX-R3 drain assembly.

004-202-2221-XX MDX2 RETRO FOR FIBERGLASS

****Replace within 05 installed years**



Item	Part Number	Description
*1		Sump Assembly - 2 1/2" (must be present in the pool)
*2		Seal Ring
**3	005-252-2070-00	Clip Anchor MDX2 Fiber Retro
*4		Screw: No. 10X2 1/4" Security Head 316 SS
**5	005-252-2209-00	Lower Support
**6		Screw: 12 x 2 3/8" Security Head 316 SS
**7	005-252-2207-00	Upper Support
**8		Screw: No. 10X3/4" Security Head 316 SS
**9	005-252-2205-XX	MDX2 Cover (XX=Color Code)
**10		Screw: No. 10X3/4" Security Head 316 SS
**11		Screw: No. 8X3/8" Security Head 316 SS
*	005-252-0818-00	Screw: 12-14 X 1 1/2" Vinyl/Fiberglass Sump (12 pk) 316 SS
*	005-252-0816-00	Screw: 12-14 X 1" Vinyl/Fiberglass Sump (12 pk) 316 SS
*		Mounting Ring
*12	005-252-0010-00	Gasket (2pk)
	005-202-2212-00	Screw Pack MDX2 Fiber (Includes item #s 2,6,8,10,11) 316 SS

*** Not part of MDX² Retro**

For technical assistance call 1.800.621.5886 or contact your regional representative

MDX2 WINTERIZATION

WITH CANISTER

If vacuum relief suction outlets are located below freeze line skip steps 1 and 2.

1. Remove grate from wall drain and install a 13-3/4 blow through plug and blow line to achieve airlock.
2. If 3rd suction line is installed remove grate, install a 13-3/4 blow-through plug and blow line to achieve airlock.
3. If vent tube is installed, install blow through plug and blow line to achieve airlock. Repeat vacuum out canister. For winterizing canister visit www.1Paramount.com and click on winterization instructions.

WITHOUT CANISTER

If vacuum relief suction outlets are located below freeze line skip steps 1 and 2.

1. Remove grate from wall drain and install a 13-3/4 blow through plug and blow line to achieve airlock.
2. If 3rd suction line is installed remove grate, install a 13-3/4 blow-through plug and blow line to achieve airlock.
3. If vent line is installed in main suction line, plug vent line and install blow through plug in pump inlet and blow line to achieve airlock.
4. Lastly, blow vent line to achieve airlock.

Vent Tube Warning Labels

Included in each MDX2 are two warning labels that need to be placed on the pool equipment if the pool is to be winterized and has a vent tube on any of the drains plumbed on the pool. Attach the smaller label to the vent pipe where it terminates to atmosphere. (See Fig. 9)

Attach the larger label to the control panel next to the controller for the pump with the vent tube plumbed to it. (See Fig. 10)

Fig. 9

WARNING

High Suction Atmospheric Vent!
Do not operate pool pump(s) with this pipe plugged!
If necessary to plug vent to winterize the pool do not restart pool until plug is removed

AVERTISSEMENT

Ventilation atmosphérique à grande succion!
Ne pas faire fonctionner la pompe (s) de la piscine avec un bouchon dans ce tuyau!
S'il est nécessaire mettre un bouchon pour hiverner la piscine, ne pas redémarrer la piscine jusqu'à ce que le bouchon soit enlevé.

001-025-8215-00 REV 043014

Fig. 10

WARNING

When starting pool after winterization, remove plug from atmospheric vent pipe before energizing pool pump(s)!

Test vent by blocking drain. Air should enter the pipe and cause the pump to cavitate releasing the suction on the drain block.

AVERTISSEMENT

Lors du démarrage de la piscine après l'hiver, retirez le bouchon du tuyau de ventilation atmosphérique avant de mettre la pompe (s) de la piscine en marche!

Testez la ventilation en bloquant le drain. L'air doit entrer dans le tube et provoquer la cavitation de la pompe et relâcher l'aspiration sur le bloc de drainage.

001-025-8216-00 REV 051314

NOTES

NOTES

NOTES