

## TECHNICAL BULLETIN

### Twist Lock Caps – Feb. 2, 2016

Recently we began shipping our PV3 and PCC2000 Step Nozzles with our new Twist Lock Caps in some colors. In reading the attached installation sheet you will see that a new style small nozzle tool with the cross feature is needed to hold the nozzle stem in place while twisting on the new Twist Lock Cap.

Since not all nozzles are purchased with tools, we thought you should be aware of how to twist lock the caps without the tool. Immobilize the nozzle stem by holding it between your thumb and pointer finger and just twist the cap in place. All small nozzle tools shipped starting from 1/25/16 are the new style.

#### TWIST LOCK CAP INSTALL FOR RANDOM NOZZLE



1. Select nozzle size from pool plan and using the nozzle tool to twist on caps.



2. Place the nozzle inside the nozzle tool to hold it from spinning as you twist on the cap.



3. Place the cap on the nozzle. It will go on and twist one way.



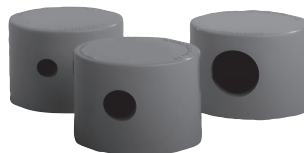
4. Turn cap clockwise until it snaps into place.



Small Nozzle Tool Part #004-552-5452-00

004-027-8899-00 REV110215

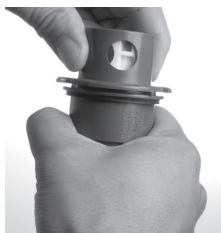
#### TWIST LOCK CAP INSTALL FOR RATCHETING NOZZLE



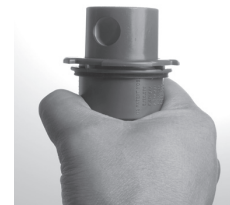
1. Select nozzle size from pool plan and using the nozzle tool to twist on caps.



2. Grip the nozzle tightly and place the cap on the nozzle. It will only go on and twist one way.



3. Turn cap clockwise until it snaps into place.



4. To remove the cap twist cap counter clockwise.

004-027-8899-00 REV110215