

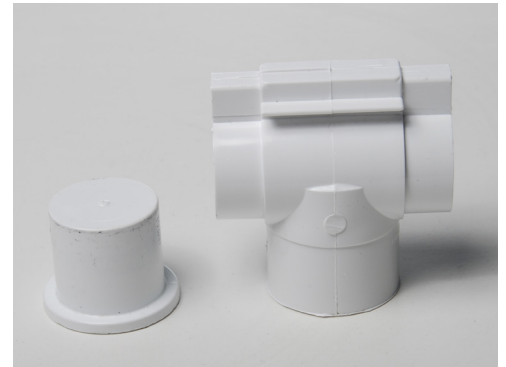
## TECHNICAL BULLETIN

### Joining the AirBar using a tee or pipe • Feb 8, 2016

#### Using the tee as a coupler

You may use an Airbar tee by using a 1" plug on the bottom part of the tee and using the tee as a coupler.

**Note:** This will require the trench in the gunite to be at least 2 3/4" deep to allow enough depth for the bottom part of the tee and the plug when being used as a connector and no cutout around the 1" riser pipe/s from the blower in the gunite would be needed.



#### Using pipe as a coupler

You may use a 1" piece of pipe by 3" long as an inside coupler on the two pieces of Airbar.

**Note:** You will have to use the Airbar coupling adapter #004-852-9300-00 to connect the top part of the AirBar together. The trench in the gunite would be at least 1 1/2" deep with a cutout around the 1" riser pipe/s from the blower 1" deep.



Airbar coupling adapter  
#004-852-9300-00