

INSTALLATION GUIDE



Fig. 1



Fig. 2



Nozzle actuated right



Nozzle actuated left

1. Blow out all return lines of any debris before installing the SwingJets.
2. The new SwingJet comes assembled. Remove the cover with the provided SwingJet tool (Fig. 1). Turn counter clockwise until it clicks. Actuate the nozzle until the nozzle jet is either all the way to the left or to the right (Fig. 2).

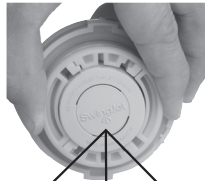
Fig. 3



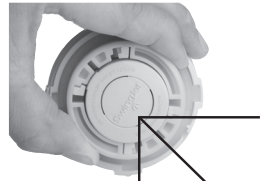
Fig. 4



90° Cleaning Angle Left



90° Cleaning Angle Down



90° Cleaning Angle Right

3. Put one wrap minimum of Teflon tape on the threads to make the nozzle threads not seize up over time. Using the provided tool thread the SwingJet into the return until tight (Fig. 3).
NOTE: THE TOOL IS REVERSABLE. ONE SIDE WILL FIT OVER THE OUTSIDE RING OF THE SWINGJET. NEVER USE A WRENCH DIRECTLY ON THE SWINGJET, IT WILL DAMAGE THE SWINGJET.
4. Grasp the cream colored cam and direct the nozzle pattern toward the area to be affected by the flow of water. Remember the nozzle is going to ratchet right or left depending on which of the two side notches you placed the pins in. See illustration for aiming cleaning angles (Fig. 4).
5. After turning and adjusting the cam be sure that the ratchets in the cam are seated by gently rocking the cam right and left to make sure the ratchets are in the groove.

004-027-8805-00 REV042616

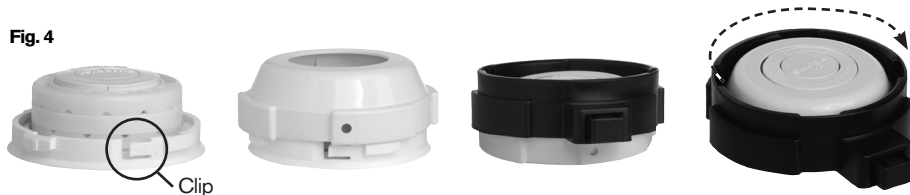
US and Foreign patents and patents pending see www.1paramount.com/about/patents/



295 East Corporate Place • Suite 100 • Chandler, AZ 85225
Toll Free: 1.800.621.5886 • Phone: 480.893.7607 • Fax: 480.753.3397
Paramount@1Paramount.com • www.1Paramount.com

Paramount
Pool Life. Simplified.

Fig. 4



- Once in position find the clip on the outside ring of the nozzle retainer and place the hole in the cover so it is just to the counter clock wise side of the retainer clip. Line up the notches on the cover with the locking cams on the nozzle retainer. Push the cover on to the retainer and rotate clockwise until the clip snaps in the hole. Do not force the cover on when not in position. It will be difficult to remove.

ADJUSTING A SWINGJET WHEN IT IS THREADED IN PLACE

Fig. 5



- Turn the pump on so the SwingJet is on. If the SwingJet is on a water valve circuit, wait for the SwingJet to come on, and pause the water valve.
- Place the swing jet tool* (part # 005-721-4541-00) over the cover with the spring loaded key over the hole on the side of the cover of the SwingJet. Leaving the key in place, while pushing down on the button key rotate the cover counter clockwise until it stops. Do not remove the key. The extended nozzle should now be able to be rotated to the desired position. If the nozzle won't easily rotate remove the key and very slightly move the cover counter clock wise until the nozzle will rotate. Once the nozzle is set to the correct position, remove the key and rotate the cover clock wise to re-lock the cover in place.
- Cycle the SwingJet by turning the pump off and on to make sure you have set it in the desired position.

MULTI SPEED PUMPS

The Swing Sweep Jet/s may not retract or extend all the way on low speeds, but should start extending and retracting properly once the pump speed returns back to the high cleaning speed of 20 psi on the water valve. The multi speed filter pump should run at the speed needed to produce at least 25 PSI on a clean filter for at least 2 hours for effective use of the SwingJet / Sweep system. Switching off the SwingJet without a water valve requires the pump to be cycled.

Note: Pools with cartridge filters, SwingJets are a precision ratcheting nozzle/s which reverses back and forth. It is important that when cleaning your filter you follow the steps below to eliminate debris from getting into the lines and equipment (including SwingJets, chlorinators, heaters, water features and water valves and back into the pool downstream from the filter).

- Turn off the filter pump, open the filter air bleed at the top of the filter tank.
- Open/remove the drain plug on the bottom of the filter (plumbing a two way valve to replace the plug can make this a time saving and easy thing to do).
- Remove the lid from the filter. Using a hose, wash out the inside of the tank.
- After the tank is clean, remove the filter elements and clean them thoroughly. Refer to the cartridge manufacturer's instructions for proper cleaning procedure.
- When clean, replace the filter elements. Put the drain plug back / or turn off the two way valve (if installed), replace and seal the filter lid. Turn on the pump (never stand over any piece of equipment you have just worked on when turning on the pump). When water starts coming out of the air bleed close it.

NOTE: Failure to follow the above steps can result in jamming by debris which will result in the SwingJet needing to be removed and cleaned.

*SwingJet tool must be purchased separately when you buy individual jets. Tool is included when purchasing 3 pack SwingJets.