

# MDX2 OWNER'S MANUAL MAINTENANCE AND INSTALLATION GUIDE

(RETROFIT FIBERGLASS, VINYL &  
CONCRETE POOLS WITH MDX)

SUBMERGED SUCTION OUTLET  
FOR MULTIPLE DRAIN USE FOR USE ON FLOOR



Safety compliant according to the Virginia Graeme Baker Pool and Spa Safety

Act ANSI/APSP - 16 - 2011

Compliant with ANSI/APSP - 7 - 2006.

## NOTICE

To Installers: Read and follow these instructions. Give these instructions to the facility owner to keep for future reference. Follow all codes and regulations that apply to the design, installation and use of suction outlet fittings.



## WARNING

MDX<sup>2</sup> and SDX<sup>2</sup> must be installed in accordance with Paramount's written instruction manual, and in conformity with applicable Federal, State, Local and Swimming pool industry building and safety codes.



# Paramount

Pool Life. Simplified.

295 East Corporate Place • Suite 100 • Chandler, AZ 85225

Toll Free: 1.800.621.5886 • Phone: 480.893.7607 • Fax: 480.753.3397

Paramount@1Paramount.com • [www.1Paramount.com](http://www.1Paramount.com)

US and Foreign patents and patents pending see [www.1paramount.com/about/patents/](http://www.1paramount.com/about/patents/)

004-027-8793-00

REVXX

ECN\_XX

Publish Date 11/29/16



**DEATH or SERIOUS INJURY** will result from pool or spa drain covers or grates that are improperly installed, missing, clogged, or broken.

- Inspect pool and spa before each use to ensure that drain covers and grates are properly in place and secured.

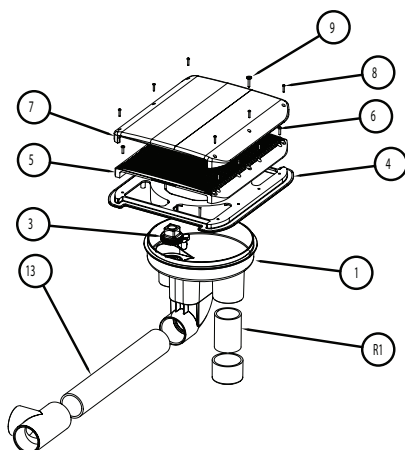
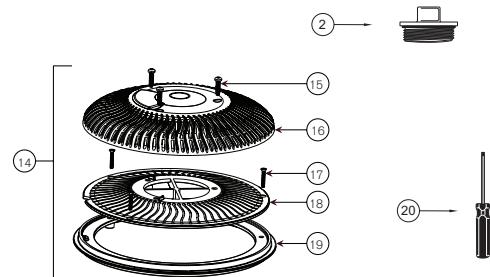
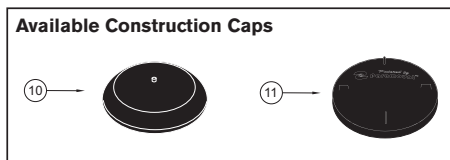
## MAINTENANCE INSTRUCTIONS & WARNINGS:



**DEATH or SERIOUS INJURY** can result from pool or spa drain covers or grates that are clogged by debris.

- All pool and spa drain covers may become obstructed by debris and should be cleaned periodically due to clogging from debris, such as pieces of plastic, hair, fabric, twigs, leaves, seeds, etc.
- The frequency of periodic cleaning will vary depending on the amount and type of debris introduced into the pool or spa
- Clogging of the drain cover will increase the suction effect and increase the likelihood of death or serious injury from those hazards listed above.
- A clogged drain can negatively affect the safety of the drain.
- It is advisable to have a qualified pool or spa professional perform this inspection and debris removal from the pool and spa drain covers.

## Replace cover within 05 installed years

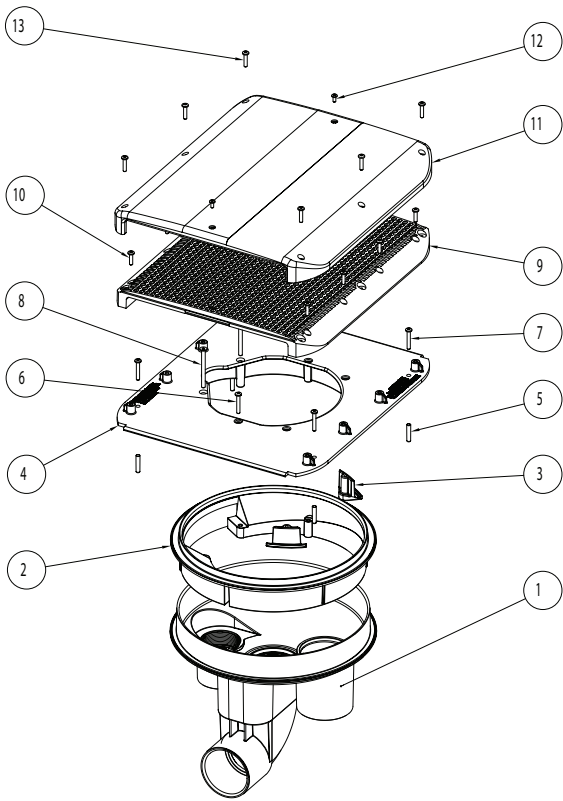


Item	Part Number	Description
*R1	N/A	Cap not used.
1	005-202-2013-00	Sump MDX Concrete - 2½"
2	005-252-1611-00	Plug Pressure Test 2½" w/ O-Ring (4 pk)
3	005-252-1605-00	Plug 2" (6 pk)
4	005-252-2208-00	Plaster Ring
5	005-202-2206-00	Upper Support
6	005-252-0891-00	Screw: No. 10X3/4" Security Head (12 pk)
7	005-252-2204-XX	Cover
8	005-252-0892-00	Screw: No. 8X3/4" Security Head (12pk)
9	005-252-0872-00	Screw: No. 8X3/8" Security Head (12pk)
*10	005-202-1155-00	Plaster Cap
*11	005-202-1148-00	Sump Construction Cap
13	006-202-6180-00	Sump Adaptor Kit Required to Reduce Pipe Size
14	004-162-2212-XX	SDX High Flow Safety Drain (2pk) (XX = Color Code)
15	005-252-0828-00	Screw: 10X7/8 TORX W/PIN SS B (12 pcs)
16	005-252-2084-XX	SDX Cover w/ Screws
17	005-252-0864-00	Screw: 10-32 x 1/2 PHIL FLT HD machine 316SS (12 pcs)
18	005-252-2066-00	SDX Support Concrete
19	005-252-2050-00	SDX Ring Concrete)
20*	005-252-0895-00	T25 Security Screwdriver
*	004-252-5476-00	Plug Wrench

\* Not part of MDX<sup>2</sup>

**WARNING:** MDX<sup>2</sup> and SDX must be installed in accordance with Paramount's written instruction manual, and in conformity with applicable Federal, State, Local and Swimming pool industry building and safety codes.

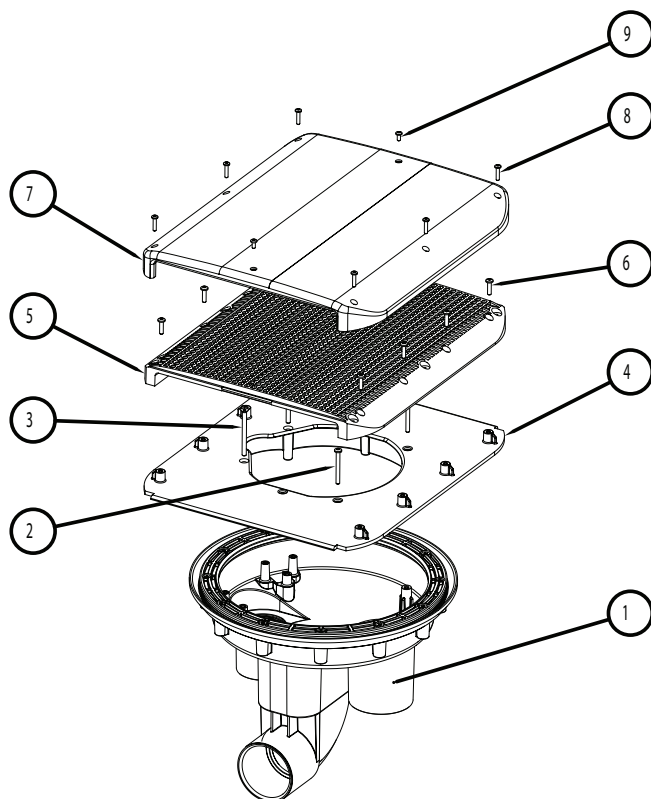
Replace cover within 05 installed years



Item	Part Number	Description
*1	005-202-2018-00	Sump MDX Concrete - 2 1/2" (must be present in the pool)
*2		Leveling Ring
3	005-252-2070-00	Clip Anchor MDX <sup>2</sup> Fiber Retro
4	005-202-2209-00	Lower Support
5		Concrete Anchors
6		Screw No. 10x 2 1/4" Security Head
7		Screw 10 x 1 1/4" Security Head
8		Screw No. 12x 2 3/8" Security Head
9	005-202-2207-00	Upper Support
10		Screw No. 10X3/4" Security Head
11	005-252-2205-XX	MDX <sup>2</sup> Cover (XX=Color Code)
12		Screw No. 8X3/8" Security Head
13		Screw No. 10X3/4"
	005-202-2213-00	Screw Pack MDX <sup>2</sup> Retro (includes item #5,6,7,8,10,12,13.)

\* Not part of MDX<sup>2</sup> Retro

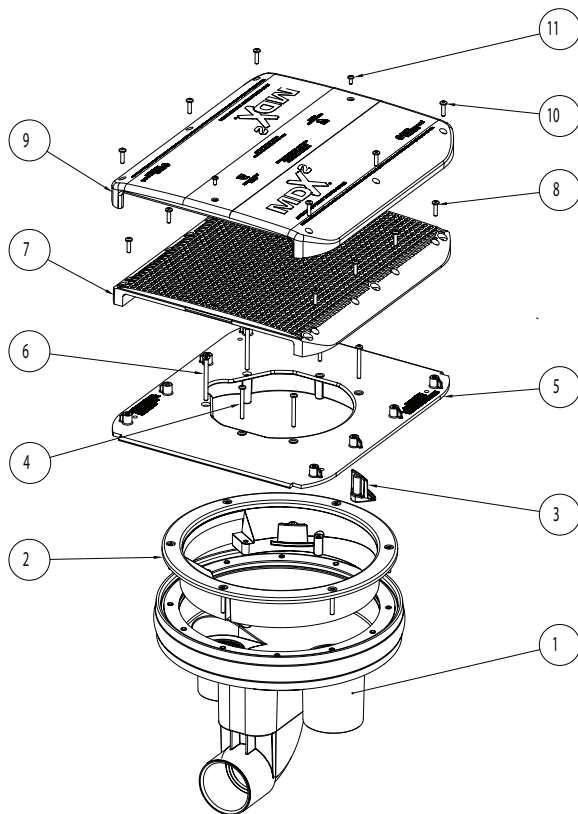
# Replace cover within 05 installed years



Item	Part Number	Description
*1	005-252-2014-00	Sump Assembly - 2 1/2" (must be present in the pool)
2		Screw: No. 10X2 1/4" Security Head
3		Screw: 12 x 2 3/8" Security Head
4	005-252-2209-00	Lower Support Vinyl/Fiber
5	005-252-2207-00	Upper Support (XX=Color Code)
6		Screw: No. 10X3/4" Security Head
7	005-252-2205-XX	MDX <sup>2</sup> Cover (XX=Color Code)
8		Screw: No. 8X3/4" Vinyl Security Head
9		Screw: No. 8X3/8" Security Head
*	005-252-0818-00	Screw: 12-14 x 1 1/2" Vinyl Sump
*	005-252-2044-00	Seal Ring
*	005-252-0010-00	Vinyl Gaskets (2 pk)
#	005-202-2211-00	Screw Pack MDX <sup>2</sup> Vinyl (includes item #s 2, 3, 6, 8, 9)

\* Not part of MDX<sup>2</sup> Retro

## Replace cover within 05 installed years



Item	Part Number	Description
*1	005-252-2016-00	Sump Assembly - 2 1/2" (must be present in the pool)
*2	005-252-2046-00	Seal Ring
3	005-252-2070-00	Clip Anchor MDX <sup>2</sup> Fiber Retro
*4		Screw: No. 10X2 1/4" Security Head
5	005-252-2209-00	Lower Support
6		Screw: 12 x 2 3/8" Security Head
7	005-252-2207-00	Upper Support
8		Screw: No. 10X3/4" Security Head
9	005-252-2205-XX	MDX <sup>2</sup> Cover (XX=Color Code)
10		Screw: No. 10X3/4" Security Head
11		Screw: No. 8X3/8" Security Head
*	005-252-0818-00	Screw: 12-14 X 1 1/2" Vinyl/Fiberglass Sump (12 pk)
*	005-252-0816-00	Screw: 12-14 X 1" Vinyl/Fiberglass Sump (12 pk)
*		Mounting Ring
*	005-252-0010-00	Gasket (2pk)
	005-202-2212-00	Screw Pack MDX <sup>2</sup> Fiber (Includes item #s 2,6,8,10,11)

\* Not part of MDX<sup>2</sup> Retro